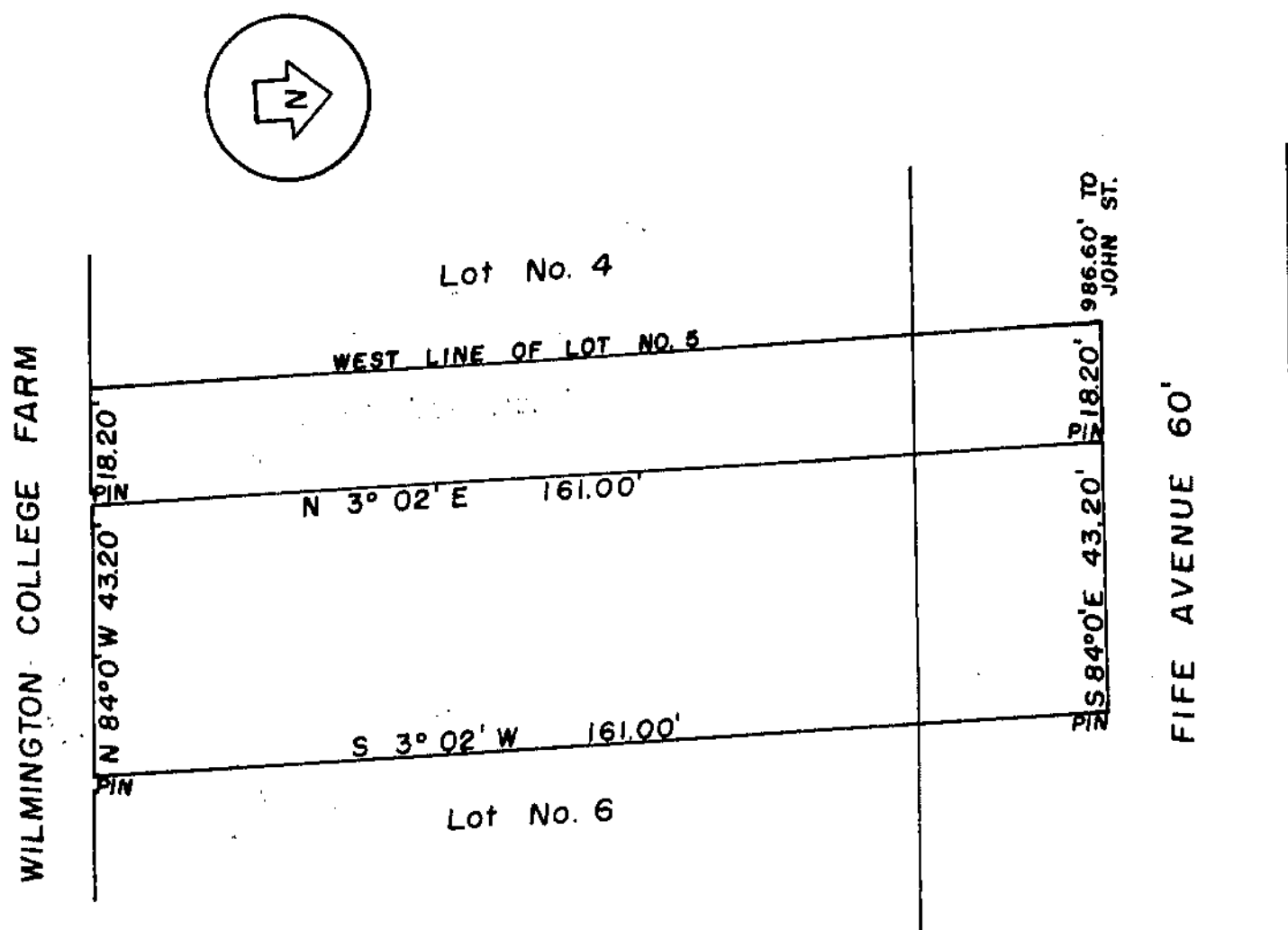


I hereby certify the above to be a correct plat of a survey made by me on September 25, 1959.

*Maynard Barton*  
Registered Surveyor No. 3966



WAYNE E. SPROUSE  
EAST PART LOT No. 5  
FRED DOCTER'S LOTS  
CITY OF WILMINGTON  
CLINTON COUNTY, OHIO  
1" = 30'  
m.s. 2693

I hereby certify the above to be a correct plat of a survey made by me on September 19, 1959.

*Maynard Barton*  
Registered Surveyor No. 3966