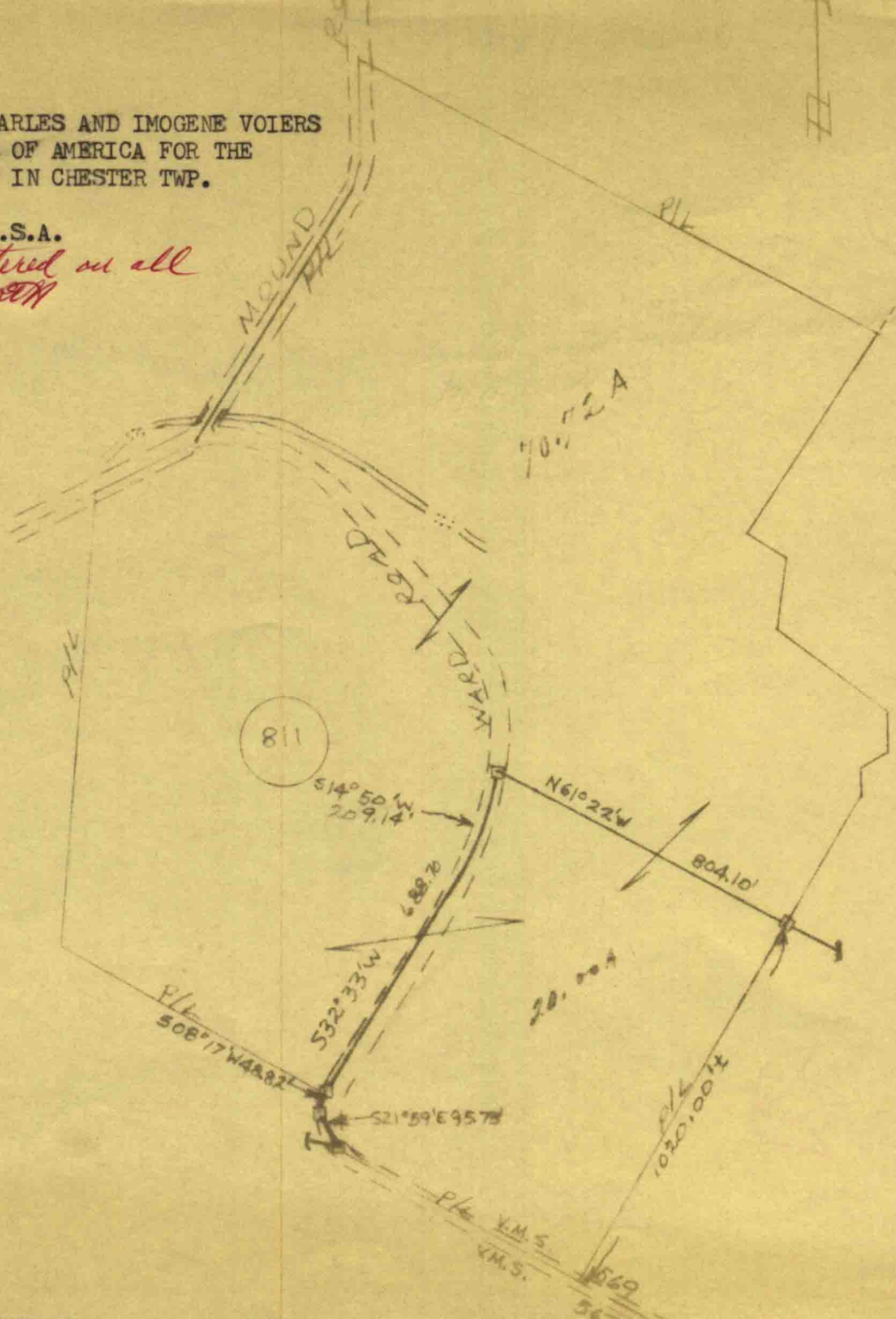


PLAT OF LAND FROM CHARLES AND IMOGENE VOIERS  
TO THE UNITED STATES OF AMERICA FOR THE  
CAESAR CREEK PROJECT IN CHESTER TWP.

NOTE: THIS COPY OF PLAT MADE  
BY THE US. CORP OF ENGR.

70.72 Acres to the U.S.A.

*checked and entered on all  
maps 2/9/71 by RTH*



CAESAR CREEK LAKE  
TRACT # 811  
70.72 AC. FEE  
SCALE: 1 inch = 400 ft.