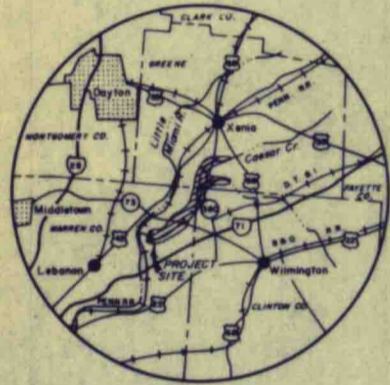


SEGMENT MAP INDEX

0.00°56'22"



VICINITY MAP

Scale in Miles
0 10 20



STATE INDEX

NOTES

The boundary of this project was compiled from deed descriptions, and aerial surveys, etc.

This map is drawn on the Ohio State Plane Coordinate System, South Zone.

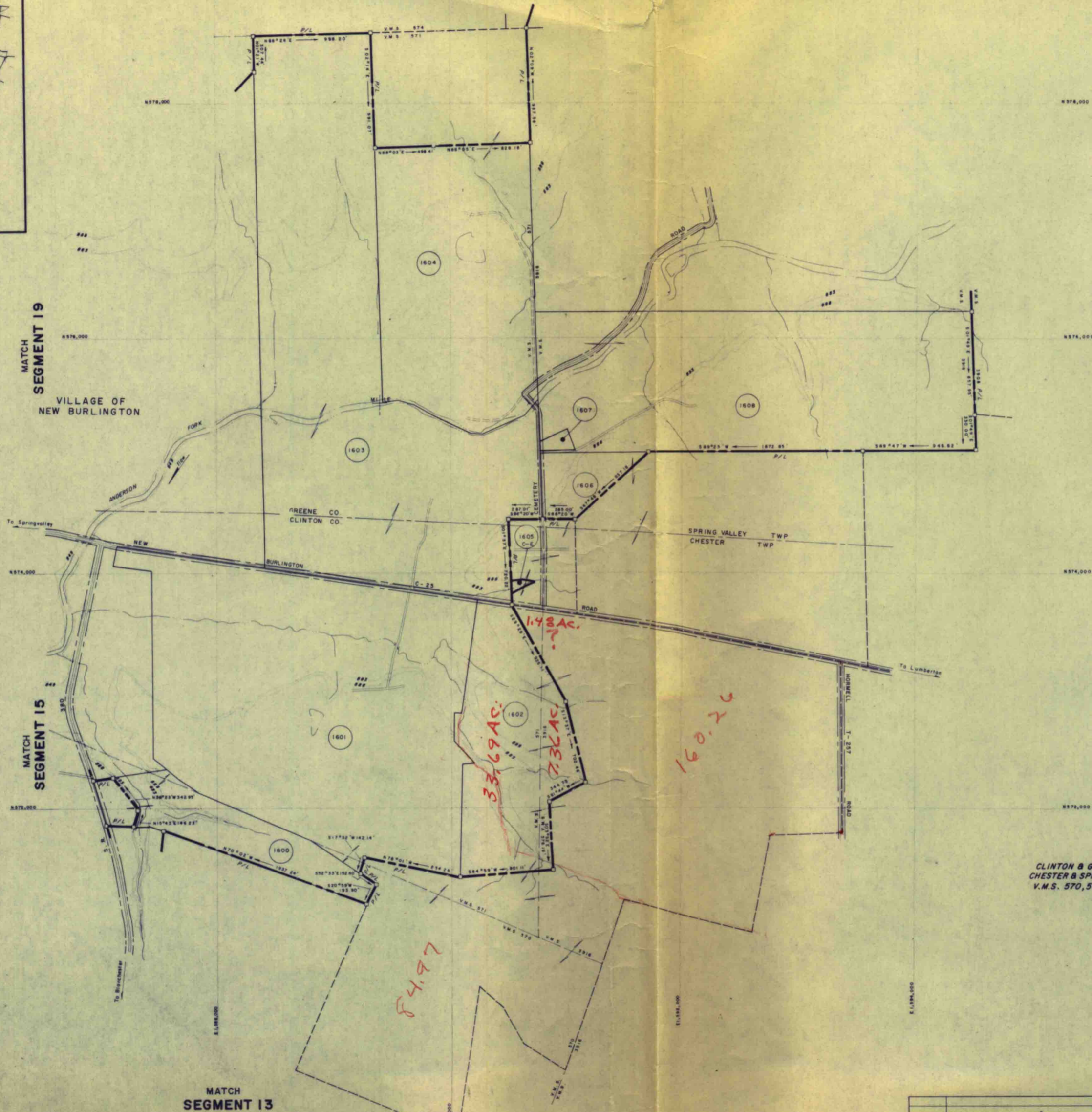
The aerial photography ground control and mapping of the land depicted on this sheet was performed by Burger Associates, Ltd., Columbus, Ohio, under Contract No. DA-CW27-66-C-0048 CIVENS-65-497.

Tract numbers having "E" suffix denotes usual type perpetual flowage easements unless otherwise specified.

CONTOUR LEGEND

- Minimum Pool
- Static Full Pool
- Guide For Acquisition

MATCH SEGMENT 17



MATCH SEGMENT 19

VILLAGE OF NEW BURLINGTON

MATCH SEGMENT 15

MATCH SEGMENT 13

MATCH SEGMENT 17

MATCH SEGMENT 18

CLINTON & GREENE CO.
CHESTER & SPRING VALLEY TWP
V.M.S. 570, 571 & 3916

TRACT REGISTER

AUTH	TRACT NO.	LAND OWNER	ACREAGE				REMARKS
			FEE	PERPETUITY EASEMENT	PERMIT	TRANS. OTHER	
	1600	HERBER K. JACKSON	19.23				
	1601	MABEL K. CARR	131.40				
	1602	RUTH A. HOPKINS & CATHERINE K. KLINE	41.05				
	1603	FRANK H. LUNDY, ET AL.	150.64				CLINTON CO. 2748 AC., GREENE CO. 123.02 AC.
	1604	EVERETT J. & ALICE MENDENHALL	69.83				
	1605C	THE NEW BURLINGTON CEMETERY ASSOCIATION		0.28			
	1606	JOHN S. WIDLETON, JR. & MORA F. WIDLETON	7.75				
	1607	RAYMOND C. BAILEY, ET UX	0.78				
	1608	FRANK H. & HAZEL H. LUNDY	99.22				

ACQUISITION AUTHORIZATION
Public Law 761 Approved 28 June 1958

PROJECT MAP (CONTINUATION SHEET)

DEPT. OF THE ARMY	USING SERVICE CORPS OF ENGINEERS
LOCATION OF PROJECT	TRANSPORTATION FACILITIES
STATE OHIO	RAILROADS PENNSYLVANIA R R CO
COUNTY WARREN, CLINTON & GREENE	STATE ROADS 73 & 380
DIV. OHIO RIVER	FEDERAL ROADS
DIST. LOUISVILLE	AIRLINES
ARMY AREA 1 ST.	
10 MILES NW OF WILMINGTON	
20 MILES S.E. OF DAYTON	

SEGMENT 16

DEPARTMENT OF THE ARMY
OFFICE OF THE LOUISVILLE DISTRICT ENGINEER
OHIO RIVER DIVISION

DRAWN BY: S. S. S. S.	REAL ESTATE
TRACED BY: S. S. S. S.	CAESAR CREEK LAKE
CHECKED BY: S. S. S. S.	
SUBMITTED BY:	
CHIEF PLANNING REPORT BY:	
RECOMMENDED BY:	
APPROVED BY:	

CHIEF REAL ESTATE DIV. COL. CORPS OF ENGINEERS DISTRICT ENGINEER
OFFICE, CHIEF OF ENGINEERS, WASHINGTON, D. C. 20315

DATE	REVISIONS	BY

Scale 0 in Feet 200
SHEET 17 OF 23 DRAWING NO.
INSTALLATION OF PROJECT NO.