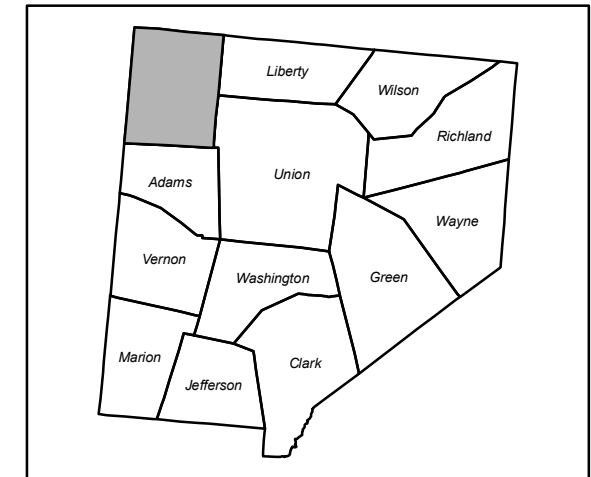


Chester Township

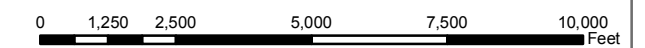


County Zoning

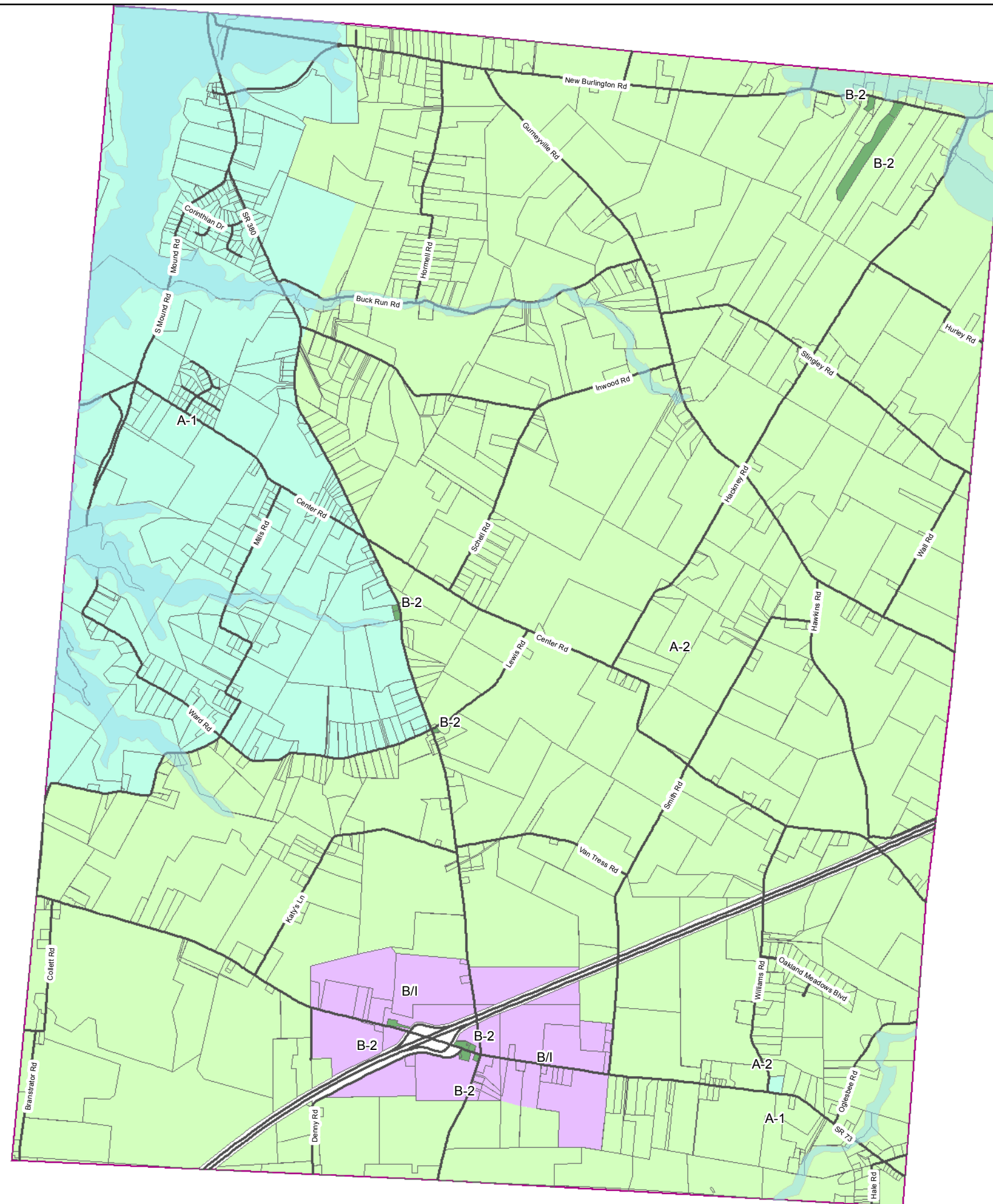
Districts, Description

- A-1, Agricultural District
- A-2, Agricultural District
- B-1, Local Business District
- B-2, General Business District
- B/I, Business / Industrial District
- FS, Farm Security District
- I, Industrial District
- R-1, Rural Residential District
- R-2, Suburban Residential District
- SU, Special Use
- UZ, Unzoned
- 100 Year Flood Zones

If you have any questions please contact the Clinton County Building & Zoning Department. Zoning Map Data was last updated on 04-13-06.



1 inch equals 1 miles



Chester



Reference:

Map Document: (C:\AVProjects\CountyZoningWork.mxd)
8/8/2006 -- 8:45:33 AM

Produced by the Clinton County GIS Department
with information from the Clinton County Building & Zoning Department.