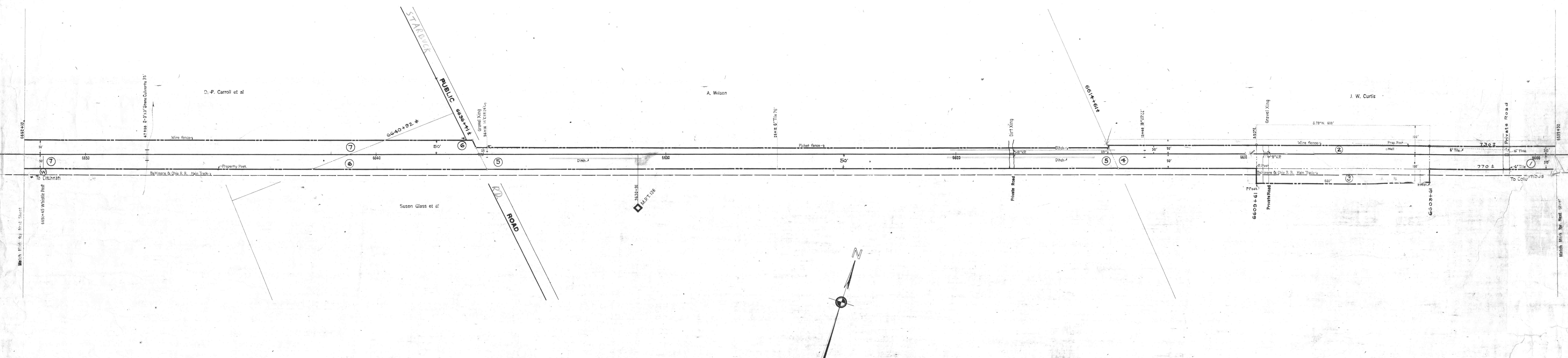


CLINTON COUNTY, OHIO
UNION TOWNSHIP



PENNUNIO3N

DATE	CORRECTED	REVISION
1892		
1894		
1895		
1896		
1897		
1898		
1899		
1900		
1901		
1902		
1903		
1904		
1905		
1906		
1907		
1908		
1909		
1910		
1911		
1912		
1913		
1914		
1915		
1916		
1917		
1918		
1919		
1920		
1921		
1922		
1923		
1924		
1925		
1926		
1927		
1928		
1929		
1930		
1931		
1932		
1933		
1934		
1935		
1936		
1937		
1938		
1939		
1940		
1941		
1942		
1943		
1944		
1945		
1946		
1947		
1948		
1949		
1950		
1951		
1952		
1953		
1954		
1955		
1956		

CONNECTING RAILWAY
FORMERLY
RIGHT OF WAY AND TRACK MAP
CLEVELAND, AKRON AND CINCINNATI RAILWAY
OPERATED BY THE
PENNSYLVANIA COMPANY
ZANESVILLE DIVISION
STATION 6599+30 TO STATION 6652+10
SCALE: 1 IN = 100 FT. JUNE 30, 1916
OFFICE OF VALUATION ENGINEER
PITTSBURGH, PA.
CHIEF DRAFTSMAN

VII
OHIO
126
FORMERLY
V.22
OHIO
126