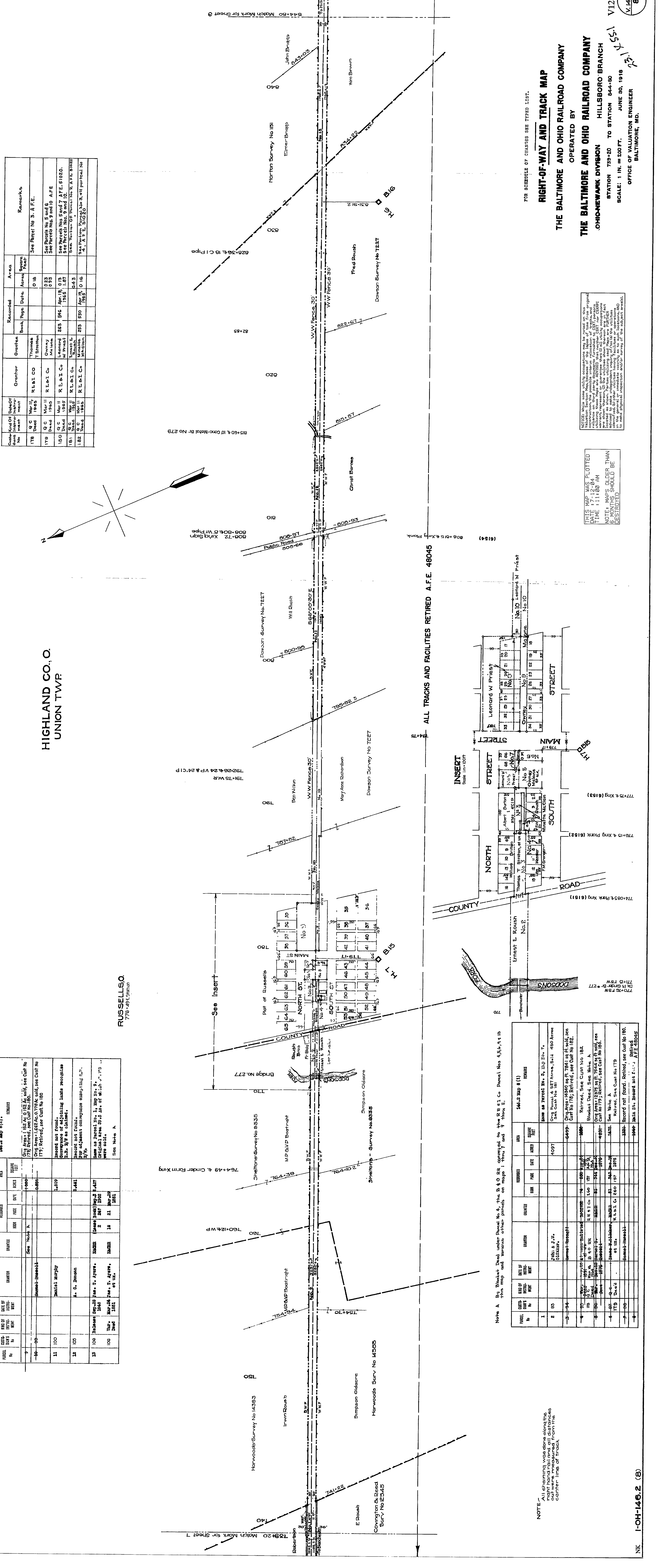


Parcel No.	Date of Survey	Grantor	Grantee	Recorded		Remarks
				Book	Page	
9	1888	James Russell	See Note A	1000		144.2 Map 8 (2) - REMAINS
10	1888	James Russell	See Note A	1000		Orig. Area - 1.622 Ac. 0.778 Ac. sold, see Cuf No 179. Retired, see Cuf No 180.
11	1888	James Russell	See Note A	1000		Orig. Area - 1.622 Ac. 0.778 Ac. sold, see Cuf No 179. Retired, see Cuf No 180.
12	1888	James Russell	See Note A	1000		Retired, see Cuf No 180.
13	1888	James Russell	See Note A	1000		Retired, see Cuf No 180.
14	1888	James Russell	See Note A	1000		Retired, see Cuf No 180.
15	1888	James Russell	See Note A	1000		Retired, see Cuf No 180.
16	1888	James Russell	See Note A	1000		Retired, see Cuf No 180.
17	1888	James Russell	See Note A	1000		Retired, see Cuf No 180.
18	1888	James Russell	See Note A	1000		Retired, see Cuf No 180.
19	1888	James Russell	See Note A	1000		Retired, see Cuf No 180.
20	1888	James Russell	See Note A	1000		Retired, see Cuf No 180.

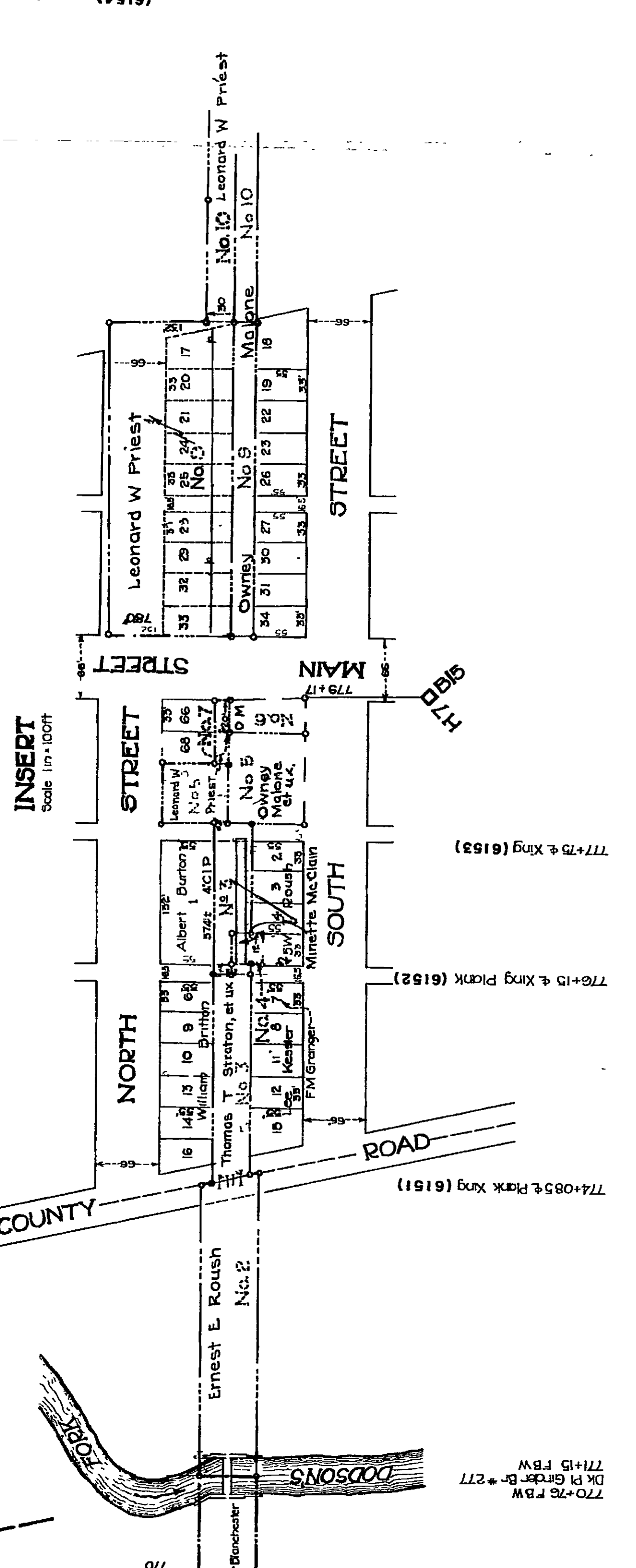
Cust. No.	Kind of Instrument	Date of Instrument	Grantor	Grantee	Recorded		Remarks
					Book	Page	
178	Q C Deed	Mar 11 1885	R. E. & I. Co	Thomas T. Stratton		0 18	See Parcel No 3, A. F. E.
179	Q C Deed	Mar 11 1885	R. E. & I. Co	Malone		0 23	See Parcels Nos 5 and 6
180	Q C Deed	Mar 11 1885	R. E. & I. Co	Leonard	263	516	See Parcels Nos 9 and 10 A. F. E.
181	Q C Deed	Mar 11 1885	R. E. & I. Co	Leonard	263	516	See Parcels Nos 9 and 10 A. F. E.
182	Q C Deed	Mar 11 1885	R. E. & I. Co	Leonard	263	516	See Parcels Nos 9 and 10 A. F. E.

**RUSSELLS**  
776-481 Station

**HIGHLAND CO., O.**  
**UNION TWP**



**ALL TRACKS AND FACILITIES RETIRED A.F.E. 48045**



Note A. By Blanket Deed under Parcel No. 4, the B. & O. RR conveyed to the R. E. & I. Co. Parcel Nos. 4, 5, 6, 7, 8, 9, 10, 11, 12, 13, 14, 15, 16, 17, 18, 19, 20, 21, 22, 23, 24, 25, 26, 27, 28, 29, 30, 31, 32, 33, 34, 35, 36, 37, 38, 39, 40, 41, 42, 43, 44, 45, 46, 47, 48, 49, 50, 51, 52, 53, 54, 55, 56, 57, 58, 59, 60, 61, 62, 63, 64, 65, 66, 67, 68, 69, 70, 71, 72, 73, 74, 75, 76, 77, 78, 79, 80, 81, 82, 83, 84, 85, 86, 87, 88, 89, 90, 91, 92, 93, 94, 95, 96, 97, 98, 99, 100.

Parcel No.	Area	Recorded	Grantor	Grantee	Remarks
1	1.622	1888	James Russell	See Note A	Retired, see Cuf No 180.
2	1.622	1888	James Russell	See Note A	Retired, see Cuf No 180.
3	1.622	1888	James Russell	See Note A	Retired, see Cuf No 180.
4	1.622	1888	James Russell	See Note A	Retired, see Cuf No 180.
5	1.622	1888	James Russell	See Note A	Retired, see Cuf No 180.
6	1.622	1888	James Russell	See Note A	Retired, see Cuf No 180.
7	1.622	1888	James Russell	See Note A	Retired, see Cuf No 180.
8	1.622	1888	James Russell	See Note A	Retired, see Cuf No 180.
9	1.622	1888	James Russell	See Note A	Retired, see Cuf No 180.
10	1.622	1888	James Russell	See Note A	Retired, see Cuf No 180.
11	1.622	1888	James Russell	See Note A	Retired, see Cuf No 180.
12	1.622	1888	James Russell	See Note A	Retired, see Cuf No 180.
13	1.622	1888	James Russell	See Note A	Retired, see Cuf No 180.
14	1.622	1888	James Russell	See Note A	Retired, see Cuf No 180.
15	1.622	1888	James Russell	See Note A	Retired, see Cuf No 180.
16	1.622	1888	James Russell	See Note A	Retired, see Cuf No 180.
17	1.622	1888	James Russell	See Note A	Retired, see Cuf No 180.
18	1.622	1888	James Russell	See Note A	Retired, see Cuf No 180.
19	1.622	1888	James Russell	See Note A	Retired, see Cuf No 180.
20	1.622	1888	James Russell	See Note A	Retired, see Cuf No 180.

NOTE - All chaining was done along the outer corners and all distances cut were measured from the center line of track.

FOR SCHEDULE OF CHANGES SEE TYPED LIST.

**RIGHT-OF-WAY AND TRACK MAP**

**THE BALTIMORE AND OHIO RAILROAD COMPANY**  
OPERATED BY  
**THE BALTIMORE AND OHIO RAILROAD COMPANY**  
**OHIO-NEWARK DIVISION**  
HILLSBORO BRANCH

STATION 738+20 TO STATION 844+80  
SCALE: 1 IN. = 200 FT.

JUNE 30, 1918  
OFFICE OF VALUATION ENGINEER  
BALTIMORE, MD.

THIS MAP WAS PLOTTED  
DATE 17-12-04  
TIME 11:00 AM  
NOTE: MAPS OLDER THAN  
6 MONTHS SHOULD BE  
DESTROYED

THIS MAP WAS PLOTTED  
DATE 17-12-04  
TIME 11:00 AM  
NOTE: MAPS OLDER THAN  
6 MONTHS SHOULD BE  
DESTROYED

V.1462  
B.

NK 1-OH-146.2 (8)