

PARCEL No.	CUSTO-DIAN'S No.	KIND OF INSTRUMENT	DATE OF INSTRUMENT	GRANTOR	GRANTEE	RECORDED			AREA		REMARKS
						BOOK	PAGE	DATE	ACRES	SQUARE FEET	
1	11	Release	Aug. 20 1868	Hedding Wainwright, Hedding Wainwright.	RECORDED	29	387	Dec. 20 1873			Same as Parcel No. 0, Map No. 1.
2	13	Release	Oct. 1 1868	James McIntire	RECORDED	63	209	Aug. 25 1902	4.221		50' on each side of Center line with such further grounds as may be necessary for the proper construction of any bridges, culverts, cuts, fills or any other structure where the same may be necessary 1800 sq. ft. occupied by Public Road.
3	14	Release	May 19 1868	John Holaday	RECORDED	62	213	Aug. 25 1902	5.103		This instrument conveys 50' on each side of Center line with such further grounds as may be necessary for the proper construction of any bridges, culverts, cuts, fills or any other structure where the same may be necessary. See Note A.
4	15	Release	Apr. 2 1860	George Jackson	RECORDED						Retired, See Cust No 183
5	15	Ret. Dead	Nov. 18 1868	John B. Hodson	RECORDED	16	343	May 4 1869			Hodson executed Warranty Deed for parcel released by Jackson deceased. See Note A.
6	16	Ret. Dead	June 14 1860	James Jackson	RECORDED	11	471	May 24 1861			3300 sq. ft. occupied by Public Road. See Note A. Retired, See Cust No 183

Note-A: By Blanket Deed under Parcel No. 2, the B LORR conveyed to the R E I Co Parcels 2 thru 17 this map, Parcel No. 2 map no. 1, and various parcels on maps no. 3 thru 11

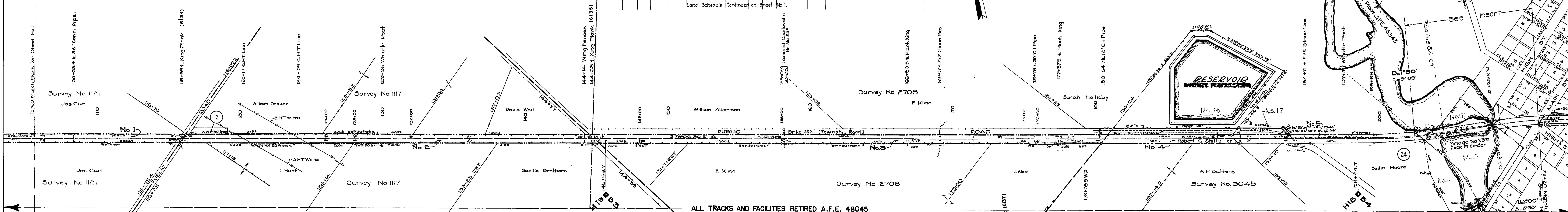
AUTHORITY	DATE INSTALLED OR RETIRED	DESCRIPTION
C 17087 AFE 578	Installed Sept 15, 1916	Construction of 100 ft of 7 in WIP section line to reservoir located at Westboro, Ohio at station 207+69.5.
C 28849 AFE 11487	Retired Feb 14, 1927	Sale of old material in dwelling, barn and outbuildings, sta 207+60.
C 32744 AFE 15047	Completed Mch 31, 1930	Water Treating Plant, sta 208+37

CONTINUED ON TYPED LIST.

CLINTON COUNTY, OHIO  
MARION TWP. JEFFERSON TWP

PARCEL No.	CUSTO-DIAN'S No.	KIND OF INSTRUMENT	DATE OF INSTRUMENT	GRANTOR	GRANTEE	RECORDED			AREA		REMARKS
						BOOK	PAGE	DATE	ACRES	SQUARE FEET	
1	17	Ret. Dead	May 19 1868	John Holaday	RECORDED	62	213	Aug. 25 1902			This instrument conveys 50' on each side of Center line with such further grounds as may be necessary for the proper construction of any bridges, culverts, cuts, fills or any other structure where the same may be necessary. See Note A.
2	18	Ret. Dead	Aug. 25 1902	John B. Hodson	RECORDED	16	343	May 4 1869			Hodson executed Warranty Deed for parcel released by Jackson deceased. See Note A.
3	19	Ret. Dead	June 14 1860	James Jackson	RECORDED	11	471	May 24 1861			3300 sq. ft. occupied by Public Road. See Note A. Retired, See Cust No 183

Land Schedule Continued on Sheet No. 1.



ALL TRACKS AND FACILITIES RETIRED A.F.E. 48045

PARCEL No.	CUSTO-DIAN'S No.	KIND OF INSTRUMENT	DATE OF INSTRUMENT	GRANTOR	GRANTEE	RECORDED			AREA		REMARKS
						BOOK	PAGE	DATE	ACRES	SQUARE FEET	
14	30	War. Dead	Aug. 19 1895	Mary A. Robinson	RECORDED	51	80	Dec. 27 1895			Same as Parcel No. 10, Map No. 1. Grant's Railroad right to enter upon their lands and overflow and to maintain dams, embankment, reservoir, etc.
31	31	War. Dead	Aug. 19 1895	Andrew P. Deniston et ux	RECORDED	51	78	Dec. 27 1895			See Note A
32	32	War. Dead	Aug. 21 1895	Arcon F. Putters.	RECORDED	51	79	Dec. 27 1895			See Note A
33	33	War. Dead	Aug. 21 1895	Arcon F. Putters.	RECORDED	51	79	Dec. 27 1895			See Note A
34	34	War. Dead	Aug. 21 1895	Arcon F. Putters.	RECORDED	51	79	Dec. 27 1895			See Note A
35	35	War. Dead	Aug. 21 1895	Arcon F. Putters.	RECORDED	51	79	Dec. 27 1895			See Note A
36	36	War. Dead	Aug. 21 1895	Arcon F. Putters.	RECORDED	51	79	Dec. 27 1895			See Note A
37	37	War. Dead	Aug. 21 1895	Arcon F. Putters.	RECORDED	51	79	Dec. 27 1895			See Note A
38	38	War. Dead	Aug. 21 1895	Arcon F. Putters.	RECORDED	51	79	Dec. 27 1895			See Note A
39	39	War. Dead	Aug. 21 1895	Arcon F. Putters.	RECORDED	51	79	Dec. 27 1895			See Note A
40	40	War. Dead	Aug. 21 1895	Arcon F. Putters.	RECORDED	51	79	Dec. 27 1895			See Note A

Retired, See Cust. No 184

THIS MAP WAS PLOTTED DATE 7-12-04 TIME 11:00 AM  
NOTE: MAPS OLDER THAN 6 MONTHS SHOULD BE DESTROYED

NOTICE: While some utility occupations may be noted on this Valuation Section Map, because of the lapse of time from original construction, the possible future relocation of tracks and reliance on third party documents (furnished to OSV) persons utilizing these maps are ADVISED that neither OSV nor OSVP warrant, represent or guarantee that all utility occupations are shown. Therefore, the utilities shown thereon are in fact located as shown. Parties utilizing said maps are FURTHER advised to make independent inquiry of the utilities identified, to other utilities having facilities or operations in the general or immediate vicinity as to such locations, and to make physical inspection and/or survey of the subject areas.

Note - All chaining was done along the right hand rail, and all distances out were measured from the center line of track.

PARCEL No.	CUSTO-DIAN'S No.	KIND OF INSTRUMENT	DATE OF INSTRUMENT	GRANTOR	GRANTEE	RECORDED			AREA		REMARKS
						BOOK	PAGE	DATE	ACRES	SQUARE FEET	
17	17	Release	May 19 1868	John Holaday	RECORDED	62	213	Aug. 25 1902			This instrument conveys 30' on each side of center line with such further grounds as may be necessary for the proper construction of any bridges, culverts, cuts, fills or any other structure where the same may be necessary. Instrument also covers Parcel No. 9 and 13. See Note A. Retired, See Cust #184
26	26	Ret. Dead	Aug. 25 1902	John B. Hodson	RECORDED	16	343	May 4 1869			14945 sq. ft. occupied by Public Road. Orig. AFE 45345. Retired, See Cust No 184. See Note A.
27	27	Ret. Dead	Aug. 25 1902	John B. Hodson	RECORDED	16	343	May 4 1869			14945 sq. ft. occupied by Public Road. Orig. AFE 45345. Retired, See Cust No 184. See Note A.
28	28	Ret. Dead	Aug. 25 1902	John B. Hodson	RECORDED	16	343	May 4 1869			14945 sq. ft. occupied by Public Road. Orig. AFE 45345. Retired, See Cust No 184. See Note A.
29	29	Ret. Dead	Aug. 25 1902	John B. Hodson	RECORDED	16	343	May 4 1869			14945 sq. ft. occupied by Public Road. Orig. AFE 45345. Retired, See Cust No 184. See Note A.
30	30	Ret. Dead	Aug. 25 1902	John B. Hodson	RECORDED	16	343	May 4 1869			14945 sq. ft. occupied by Public Road. Orig. AFE 45345. Retired, See Cust No 184. See Note A.
31	31	Ret. Dead	Aug. 25 1902	John B. Hodson	RECORDED	16	343	May 4 1869			14945 sq. ft. occupied by Public Road. Orig. AFE 45345. Retired, See Cust No 184. See Note A.
32	32	Ret. Dead	Aug. 25 1902	John B. Hodson	RECORDED	16	343	May 4 1869			14945 sq. ft. occupied by Public Road. Orig. AFE 45345. Retired, See Cust No 184. See Note A.
33	33	Ret. Dead	Aug. 25 1902	John B. Hodson	RECORDED	16	343	May 4 1869			14945 sq. ft. occupied by Public Road. Orig. AFE 45345. Retired, See Cust No 184. See Note A.
34	34	Ret. Dead	Aug. 25 1902	John B. Hodson	RECORDED	16	343	May 4 1869			14945 sq. ft. occupied by Public Road. Orig. AFE 45345. Retired, See Cust No 184. See Note A.
35	35	Ret. Dead	Aug. 25 1902	John B. Hodson	RECORDED	16	343	May 4 1869			14945 sq. ft. occupied by Public Road. Orig. AFE 45345. Retired, See Cust No 184. See Note A.
36	36	Ret. Dead	Aug. 25 1902	John B. Hodson	RECORDED	16	343	May 4 1869			14945 sq. ft. occupied by Public Road. Orig. AFE 45345. Retired, See Cust No 184. See Note A.
37	37	Ret. Dead	Aug. 25 1902	John B. Hodson	RECORDED	16	343	May 4 1869			14945 sq. ft. occupied by Public Road. Orig. AFE 45345. Retired, See Cust No 184. See Note A.
38	38	Ret. Dead	Aug. 25 1902	John B. Hodson	RECORDED	16	343	May 4 1869			14945 sq. ft. occupied by Public Road. Orig. AFE 45345. Retired, See Cust No 184. See Note A.
39	39	Ret. Dead	Aug. 25 1902	John B. Hodson	RECORDED	16	343	May 4 1869			14945 sq. ft. occupied by Public Road. Orig. AFE 45345. Retired, See Cust No 184. See Note A.
40	40	Ret. Dead	Aug. 25 1902	John B. Hodson	RECORDED	16	343	May 4 1869			14945 sq. ft. occupied by Public Road. Orig. AFE 45345. Retired, See Cust No 184. See Note A.

Retired, See Cust No 184

See Note A

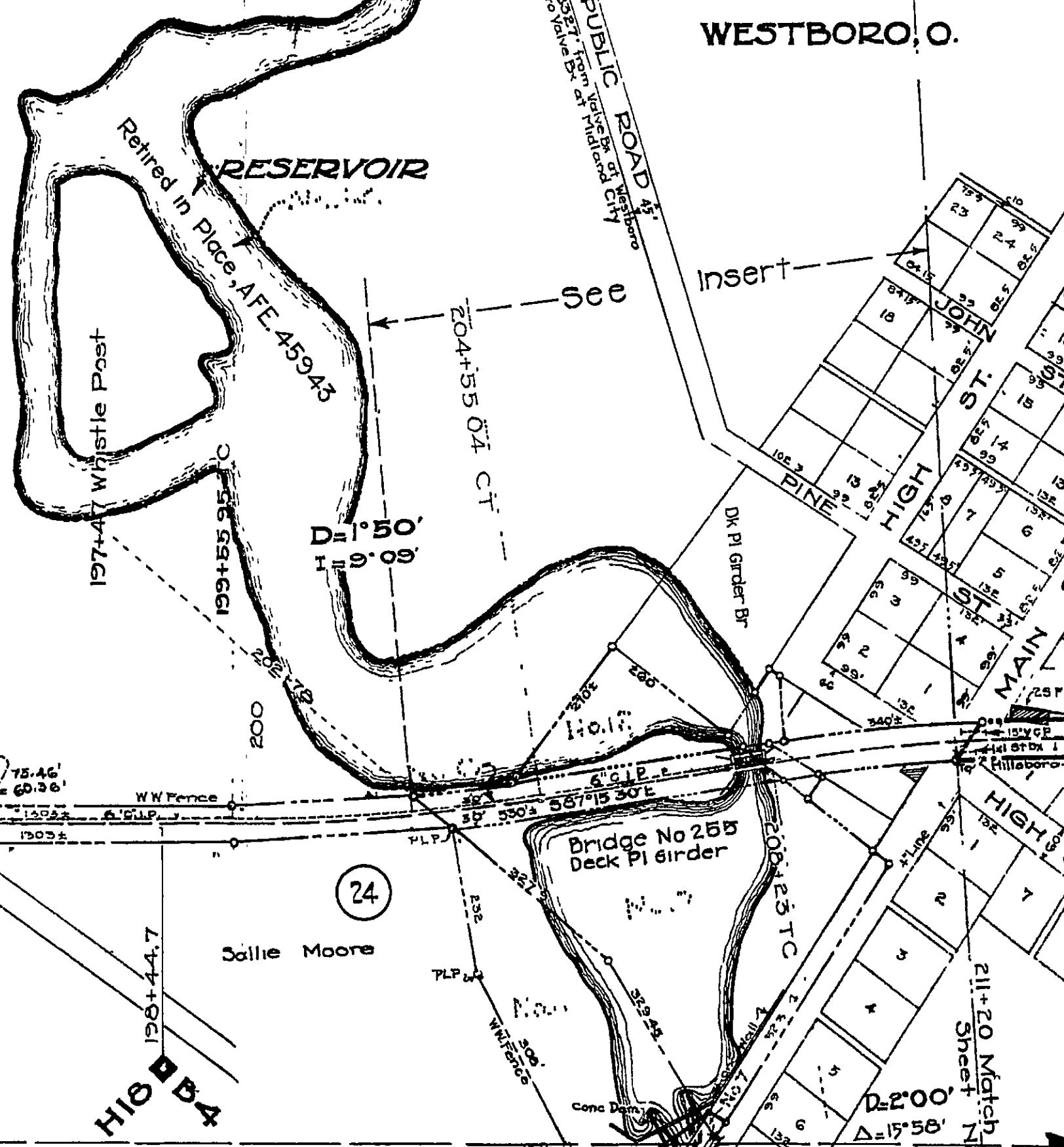
Retired, See Cust No 184

See Note A

Retired, See Cust No 184

See Note A

Retired, See Cust No 184



RIGHT-OF-WAY AND TRACK MAP  
THE BALTIMORE AND OHIO RAILROAD COMPANY  
OPERATED BY  
THE BALTIMORE AND OHIO RAILROAD COMPANY  
OHIO-NEWARK DIVISION HILLSBORO BRANCH  
STATION 105+600 TO STATION 211+200  
SCALE: 1 IN. = 200 FT. JUNE 30, 1918  
OFFICE OF VALUATION ENGINEER  
BALTIMORE, MD.