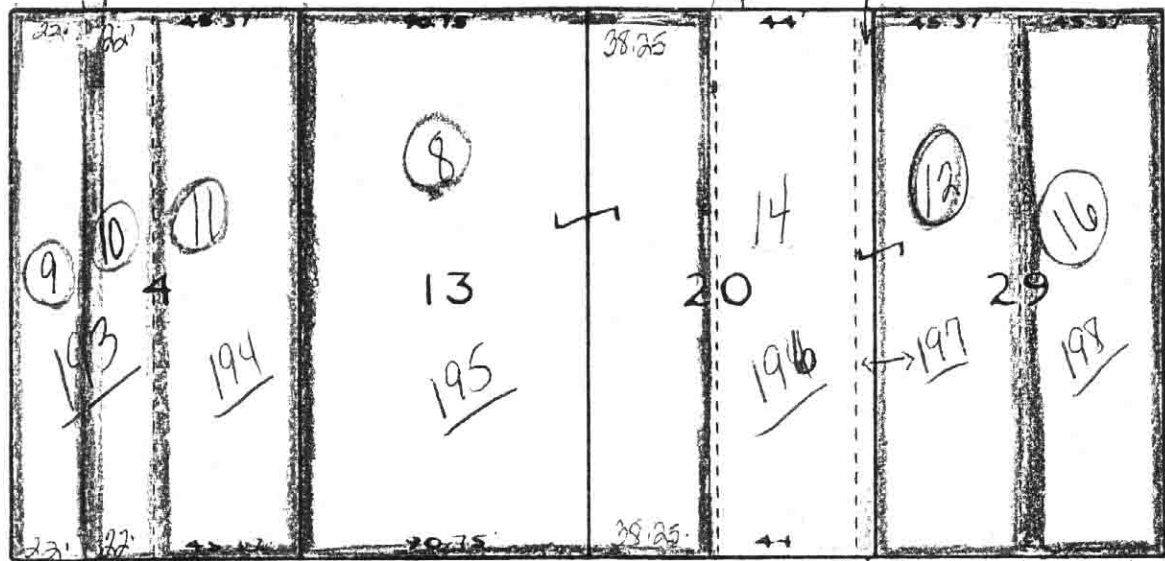


MAIN

STREET

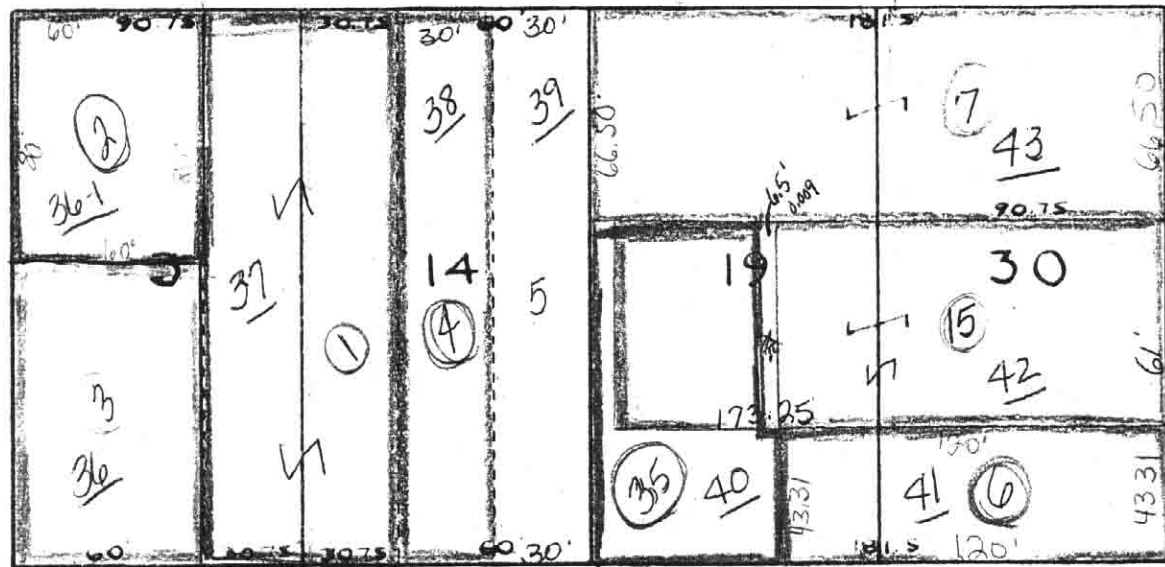
66 FT.

SPRING STREET 33 FT

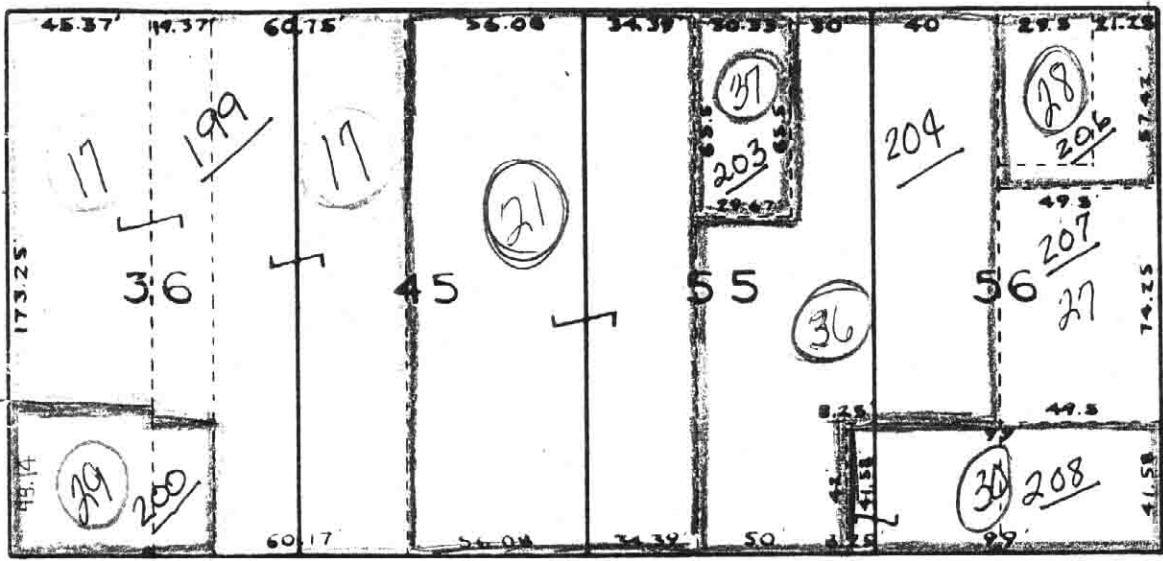


ALLEY

MULBERRY STREET 66 FT.

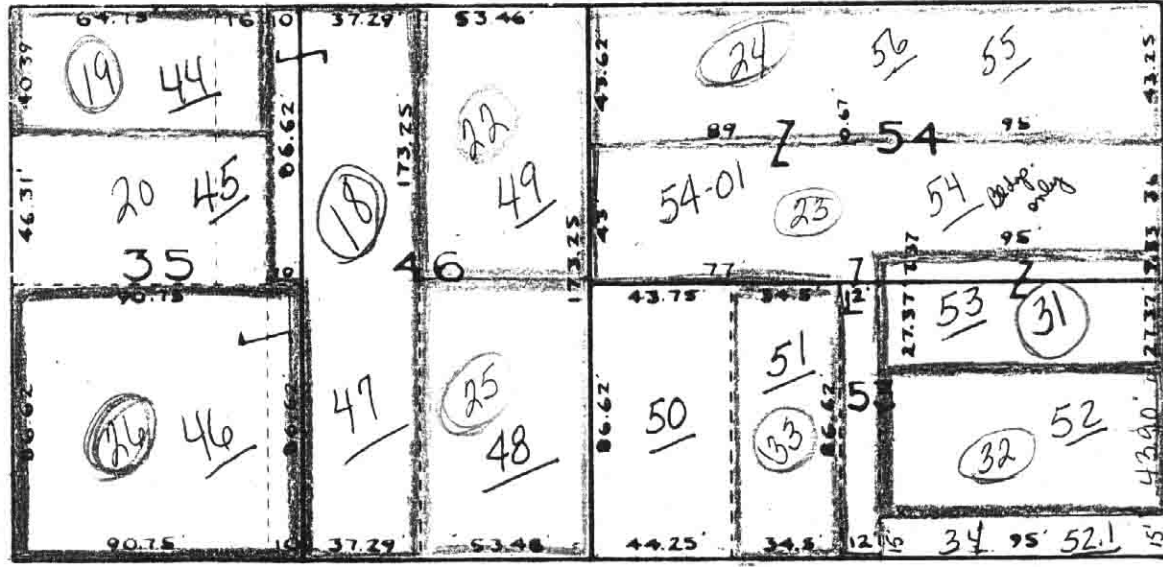


SUGARTREE



16.5 FT.

SOUTH STREET 66 FT.



STREET

66 FT.

\* DENOTES  
NON L

Numbers underlined are routing #s

WILMINGTON

ORIGINAL TOWN

SECTION \* 5

Scale: 1 in. = 60 ft

