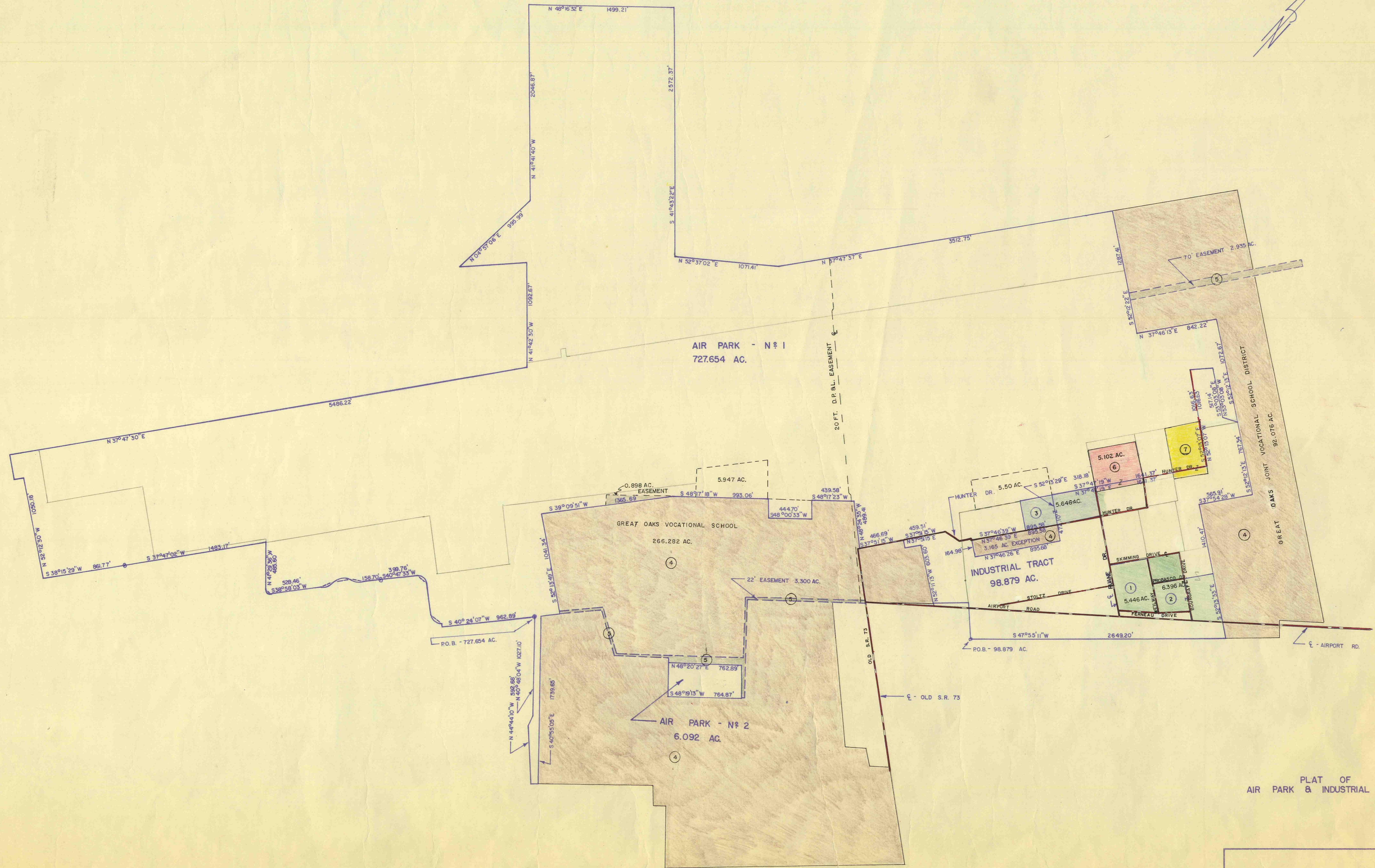
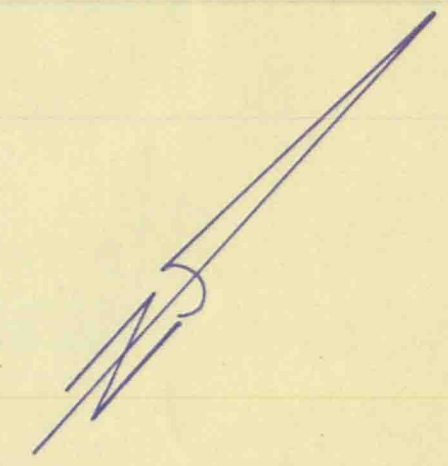


- ① FERNO - WASHINGTON 5.446 AC.
- ② FERNO-WASHINGTON
- ③ LANDRUM OIL CO.
- ④ GREAT OAKS JOINT VOCATIONAL SCHOOL
- ⑤ EASEMENTS
- ⑥ KURTZ - KACH INC.
- ⑦ HARTZELL INDUSTRIES

PERPETUAL EASEMENT 10.18 AC.
6.65 AC. FOR SEWER SYSTEM & 3.53 AC FOR DRAINAGE SYSTEM



PLAT OF
AIR PARK & INDUSTRIAL TRACTS

SCALE		DRAWN BY	
1" = 500'		J.A. HOFFMAN	
DATE		APPROVED BY	
DRAWING NUMBER			