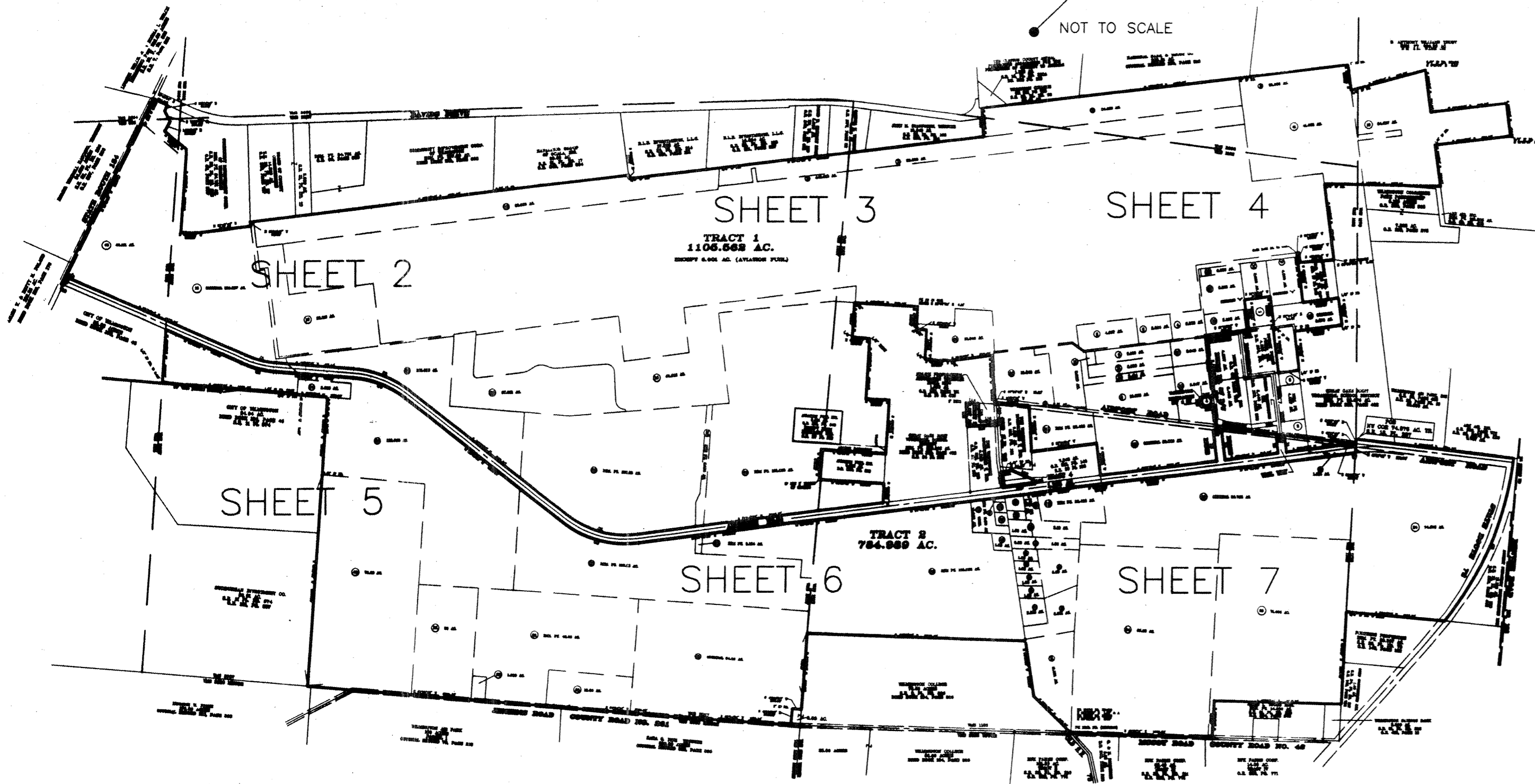


**SURVEY PLAT OF THE LANDS OF
WILMINGTON AIR PARK, INC.**
SITUATED IN VMS NUMBERS 625, 1162, 1170, 2027, 2690 & 2694
UNION TOWNSHIP, CLINTON COUNTY,
OHIO

SEPTEMBER, 2001
REVISED AUGUST, 2003

RECORDERS REC.
BOOK 33 Page 203

SOURCE DEEDS



SHEET INDEX

NO.	DEED REFERENCE	ORIGINAL ACREAGE	NET (TRACT 1)	NET (TRACT 2)
1	D.B. 267, PAGE 430	446.918 AC.	ALL	
2	D.B. 268, PAGE 35	4.967 AC.	ALL	
3	D.B. 274, PAGE 215	32.908 AC.	ALL	
4	D.B. 274, PAGE 217	2.823 AC.	ALL	
5	D.B. 276, PAGE 314	10.838 AC.	ALL	
6	D.B. 282, PAGE 436	2.824 AC.	ALL	
7	D.B. 283, PAGE 29	0.31 AC.	ALL	
8	D.B. 283, PAGE 555	3.165 AC.	ALL	
9	D.B. 284, PAGE 84	4.576 AC.	ALL	
10	D.B. 284, PAGE 106	38.965 AC.	ALL	
		4.588 AC.	ALL	
		0.983 AC.	ALL	
		47.905 AC.	ALL	
		23.113 AC.	ALL	
11	D.B. 284, PAGE 324	3.208 AC.	ALL	
		2.414 AC.	ALL	
		0.389 AC.	ALL	
12	D.B. 285, PAGE 288	6.547 AC.	ALL	
13	D.B. 285, PAGE 351	3.049 AC.	ALL	
14	O.R. 6, PAGE 740	3.000 AC.	ALL	
15	O.R. 17, PAGE 73	5.102 AC.	ALL	
16	O.R. 31, PAGE 833	156.357 AC.	39.857 AC.	13.103 AC.
17	O.R. 50, PAGE 239	2.826 AC.	ALL	
18	O.R. 54, PAGE 111	8.370 AC.	7.527 AC.	
19	O.R. 59, PAGE 165	34.557 AC.	ALL	
20	O.R. 64, PAGE 154	10.942 AC.		2.736 AC.
21	O.R. 64, PAGE 401	3.367 AC.		0.907 AC.
		1.43 AC.		1.229 AC.
22	O.R. 66, PAGE 574	26.951 AC.	ALL	
		3.124 AC.	2.506 AC.	0.409 AC.
		89.788 AC.	23.452 AC.	58.925 AC.
23	O.R. 67, PAGE 36	23.486 AC.	7.920 AC.	6.982 AC.
24	O.R. 73, PAGE 687	74.578 AC.		ALL
25	O.R. 79, PAGE 220	1.000 AC.		ALL
		10.00 AC.		ALL
		20.00 AC.		ALL
		48.63 AC.		ALL
26	O.R. 79, PAGE 223	1.00 AC.		ALL
		2.18 AC.		ALL
27	O.R. 79, PAGE 226	0.50 AC.		ALL
28	O.R. 79, PAGE 229	1.00 AC.		ALL
29	O.R. 79, PAGE 231	0.50 AC.		ALL
30	O.R. 79, PAGE 234	0.50 AC.		0.173 AC.
31	O.R. 79, PAGE 236	1.00 AC.		ALL
32	O.R. 79, PAGE 238	64.00 AC.		ALL
		197.35 AC.	61.948 AC.	56.924 AC.
33	O.R. 79, PAGE 240	71.00 AC.		ALL
34	O.R. 79, PAGE 245	85.30 AC.		ALL
		11.351 AC.		ALL
35	O.R. 79, PAGE 326	0.95 AC.		ALL
		1.63 AC.		ALL
36	O.R. 80, PAGE 280	5.001 AC.		ALL
37	O.R. 80, PAGE 289	2.108 AC.		ALL
38	O.R. 80, PAGE 298	1.00 AC.		ALL
		5.300 AC.		ALL
39	O.R. 81, PAGE 715	1.00 AC.		ALL
40	O.R. 82, PAGE 552	1.00 AC.		ALL
41	O.R. 91, PAGE 481	41.083 AC.	ALL	
42	O.R. 93, PAGE 151	0.41 AC.		ALL
43	O.R. 99, PAGE 659	45.121 AC.	42.188 AC.	
44	O.R. 103, PAGE 301	2.586 AC.		ALL
		102.953 AC.	26.214 AC.	68.631 AC.
45	O.R. 145, PAGE 163	70.23 AC.		ALL
46	O.R. 145, PAGE 675	195.568 AC.	97.833 AC.	90.080 AC.
		18.640 AC.	ALL	
		1.914 AC.	0.917 AC.	0.035 AC.
47	O.R. 148, PAGE 65	0.41 AC.		
48	O.R. 219, PAGE 461	24.213 AC.	ALL	

THE 1105.562 ACRE TRACT CONTAINS 43.743 ACRES IN VMS NO. 625,
412.687 ACRES IN VMS 1162, 35.261 ACRES IN VMS 1170, 542.797 ACRES
IN VMS 2027, 69.871 ACRES IN VMS 2690, AND 1.203 ACRES IN VMS 2694.
THE 784.989 ACRE TRACT CONTAINS 74.590 ACRES IN VMS NO. 1170,
341.534 ACRES IN VMS NO. 1162, AND 368.865 ACRES IN VMS NO. 2027.

ADJOINING OWNERS

- ① R.L.R. INVESTMENTS, L.L.C.
REMAINING PART 5.362 AC.
O.R. 298, PAGE 283
- ② THE NATIONAL BANK & TRUST CO.
1.251 ACRES
O.R. 14, PAGE 371
- ③ CITY OF WILMINGTON
0.84 ACRES
O.R. 204, PAGE 219
- ④ WILMINGTON AIR PARK, INC.
0.392 ACRES
O.R. 492, PAGE 324

LINE DATA TABLE

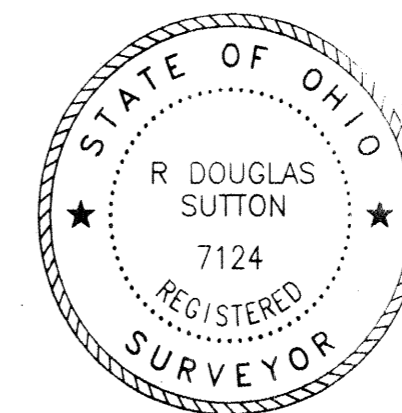
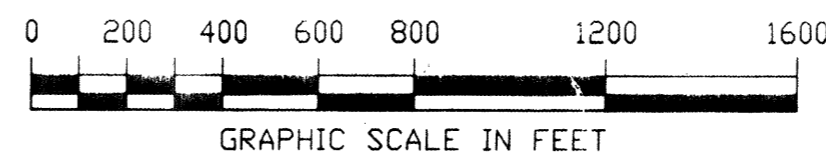
No.	Bearing & Distance
L1	N 52°08'40" W 154.89'
L2	S 51°30'20" W 102.90'
L3	S 52°08'40" E 179.27'
L4	N 52°09'47" W 332.94'
L5	S 51°30'20" W 102.92'
L6	S 52°09'47" E 357.33'
L7	N 65°31'24" W 48.63'
L8	S 19°31'15" E 133.17'
L9	S 68°31'24" W 30.03'
L10	S 48°25'58" E 235.20'
L11	S 48°25'58" E 50.03'
L12	S 43°22'44" W 360.46'
L13	N 48°21'44" W 279.27'
L14	N 48°02'14" E 151.88'
L15	S 48°26'31" E 217.06'
L16	N 43°20'16" E 209.09'
L17	S 37°46'29" W 159.87'
L18	S 52°08'20" E 106.84'
L19	N 37°45'40" E 159.87'
L20	N 53°56'30" W 182.12'
L21	N 34°56'16" E 120.22'
L22	N 67°10'58" E 298.11'
L23	S 55°30'32" E 42.71'
L24	S 37°47'37" W 375.02'

CURVE DATA TABLE

No.	Radius	Delta Angle	Arc	Tangent	Long Chord & Distance
C1	1150.00'	19°12'59.4"	385.70'	194.68'	S 58°54'55.2" W 383.89'
C2	1250.00'	19°12'59.4"	419.24'	211.61'	N 58°54'55.2" E 417.28'
C3	1250.00'	33°29'40.8"	730.74'	376.14'	S 66°03'16.1" W 720.38'
C4	1150.00'	33°29'40.8"	672.28'	346.05'	N 66°03'16.1" E 662.75'
C5	1150.00'	45°00'00.4"	903.21'	476.35'	S 60°18'06.3" W 880.17'
C6	1250.00'	45°00'00.4"	981.75'	517.77'	N 60°18'06.3" E 956.71'
C7	1958.82'	1°10'56.6"	40.42'	20.21'	N 38°23'34.3" E 40.42'
C8	3819.72'	31°30'27.6"	2100.51'	1077.55'	S 22°10'20.0" E 2074.14'

- MONUMENT LEGEND
- 5/8" Iron Pin (fd) unless otherwise shown
 - 5/8" OD Iron Pin (set) with yellow plastic cap stamped: "CLINCO & SUTTON"
 - ⊙ Iron Pipe (fd) OD size per plan
 - ⊗ Stone (fd)
 - ▲ Railroad Spike (fd)
 - △ Railroad Spike (set)
 - ⊕ P.K. or Mag Nail (set)
 - ⊞ Concrete Monument (fd)
 - PK or Mag Nail (fd)
 - ⊕ Bolt (fd) size per plan
 - ⊗ Post (fd) size per plan

NOTE: Bearings used are based on an assumed azimuth and are for purposes of angular measurement only.
Monuments found or set are in good condition unless otherwise labeled.
Deeds & Survey Records as noted on drawing are source data for this survey.



R. Douglas Sutton
R. DOUGLAS SUTTON
OHIO PROFESSIONAL SURVEYOR NO. 7124

MATHEMATICAL ACCURACY
TO 1/1000 COUNTY ENGINEER

August 9, 2003



61 SOUTH MULBERRY ST.
WILMINGTON, OH 45177
JOB NUMBER 01074
SHEET 1 OF 7