

ACCEPTING THE DEDICATION OF AMERICAN WAY, A STREET WITHIN THE CORPORATE LIMITS OF THE CITY OF WILMINGTON, FOR THE PUBLIC USE, AND ACCEPTING DEDICATION OF PORTION OF WATERLINE AND PORTION OF SEWER LINE

WHEREAS, JTJ Enterprises and Eva M. Pusateri have requested this Council to accept dedication of American Way, a street within the corporate limits of the City of Wilmington;


NOW, THEREFORE, BE IT ORDAINED BY THE COUNCIL OF THE CITY OF WILMINGTON, STATE OF OHIO:

Section 1. That the dedication to the public use of American Way, a street within the corporate limits of the City of Wilmington, as shown on attached "Exhibit A", be accepted and approved.

Section 2. That the certain 14-inch water main, 24-inch storm sewer main and 8-inch sanitary sewer main and appurtenances installed within the described dedicated area, and the existing 20-foot utility easement and/or existing U.S. Route 68 highway easement as set forth on attached "Exhibit B" and "Exhibit C" are hereby accepted for public use.

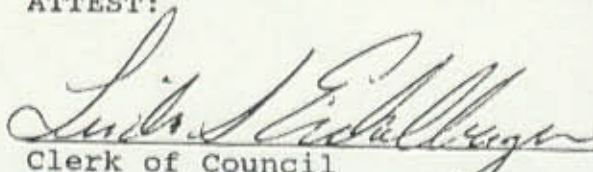
Section 3. That this ordinance shall take effect and be in full force from and after the earliest period allowed by law.

Passed this 2nd day of March, 1995.




President of Council - Pro Tem

ATTEST:



Clerk of Council

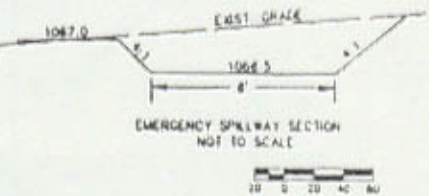
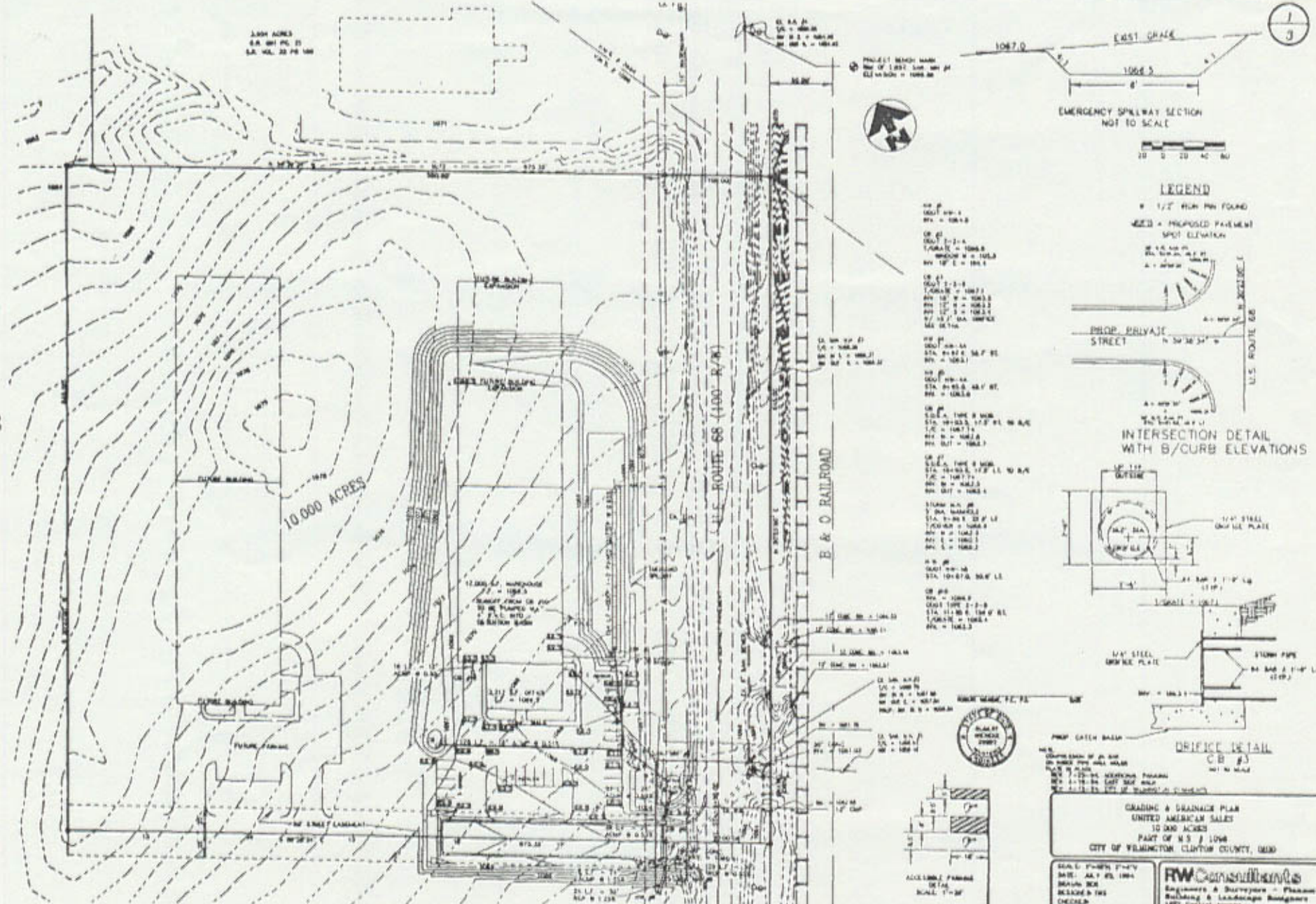
Approved by me this 2nd day of March, 1995.



Mayor

1000 ACRES
S.A. 301 PG. 23
S.A. 302, 33 PG. 100

CIA H. PUGH
D.S. 311 PG. 112
12.18 ACRES

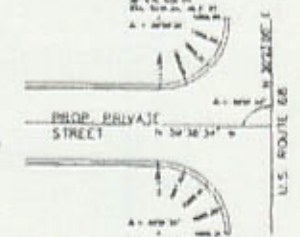


LEGEND

1/2" HIGH PIN FOUND
 SPOT ELEVATION
 PROPOSED DRIVEWAY
 STREET

OR 01
 POINT 1-1-1
 T.C.M.A.C. = 1066.5
 FINISH W = 1066.5
 FINISH E = 1066.4

OR 02
 POINT 2-1-1
 T.C.M.A.C. = 1067.1
 FINISH W = 1066.3
 FINISH E = 1066.2
 FINISH S = 1066.2
 1/2" 1/2" DIA. SPHERE
 SEE DETAIL



OR 03
 POINT 3-1-1
 T.C.M.A.C. = 1067.1
 FINISH W = 1066.3
 FINISH E = 1066.2
 FINISH S = 1066.2

OR 04
 POINT 4-1-1
 T.C.M.A.C. = 1067.1
 FINISH W = 1066.3
 FINISH E = 1066.2
 FINISH S = 1066.2

OR 05
 POINT 5-1-1
 T.C.M.A.C. = 1067.1
 FINISH W = 1066.3
 FINISH E = 1066.2
 FINISH S = 1066.2

OR 06
 POINT 6-1-1
 T.C.M.A.C. = 1067.1
 FINISH W = 1066.3
 FINISH E = 1066.2
 FINISH S = 1066.2

OR 07
 POINT 7-1-1
 T.C.M.A.C. = 1067.1
 FINISH W = 1066.3
 FINISH E = 1066.2
 FINISH S = 1066.2

OR 08
 POINT 8-1-1
 T.C.M.A.C. = 1067.1
 FINISH W = 1066.3
 FINISH E = 1066.2
 FINISH S = 1066.2

OR 09
 POINT 9-1-1
 T.C.M.A.C. = 1067.1
 FINISH W = 1066.3
 FINISH E = 1066.2
 FINISH S = 1066.2

OR 10
 POINT 10-1-1
 T.C.M.A.C. = 1067.1
 FINISH W = 1066.3
 FINISH E = 1066.2
 FINISH S = 1066.2

OR 11
 POINT 11-1-1
 T.C.M.A.C. = 1067.1
 FINISH W = 1066.3
 FINISH E = 1066.2
 FINISH S = 1066.2

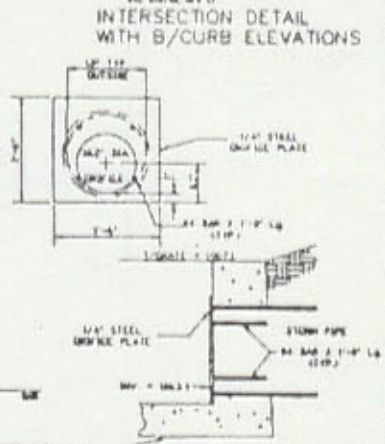
OR 12
 POINT 12-1-1
 T.C.M.A.C. = 1067.1
 FINISH W = 1066.3
 FINISH E = 1066.2
 FINISH S = 1066.2

OR 13
 POINT 13-1-1
 T.C.M.A.C. = 1067.1
 FINISH W = 1066.3
 FINISH E = 1066.2
 FINISH S = 1066.2

OR 14
 POINT 14-1-1
 T.C.M.A.C. = 1067.1
 FINISH W = 1066.3
 FINISH E = 1066.2
 FINISH S = 1066.2

OR 15
 POINT 15-1-1
 T.C.M.A.C. = 1067.1
 FINISH W = 1066.3
 FINISH E = 1066.2
 FINISH S = 1066.2

OR 16
 POINT 16-1-1
 T.C.M.A.C. = 1067.1
 FINISH W = 1066.3
 FINISH E = 1066.2
 FINISH S = 1066.2

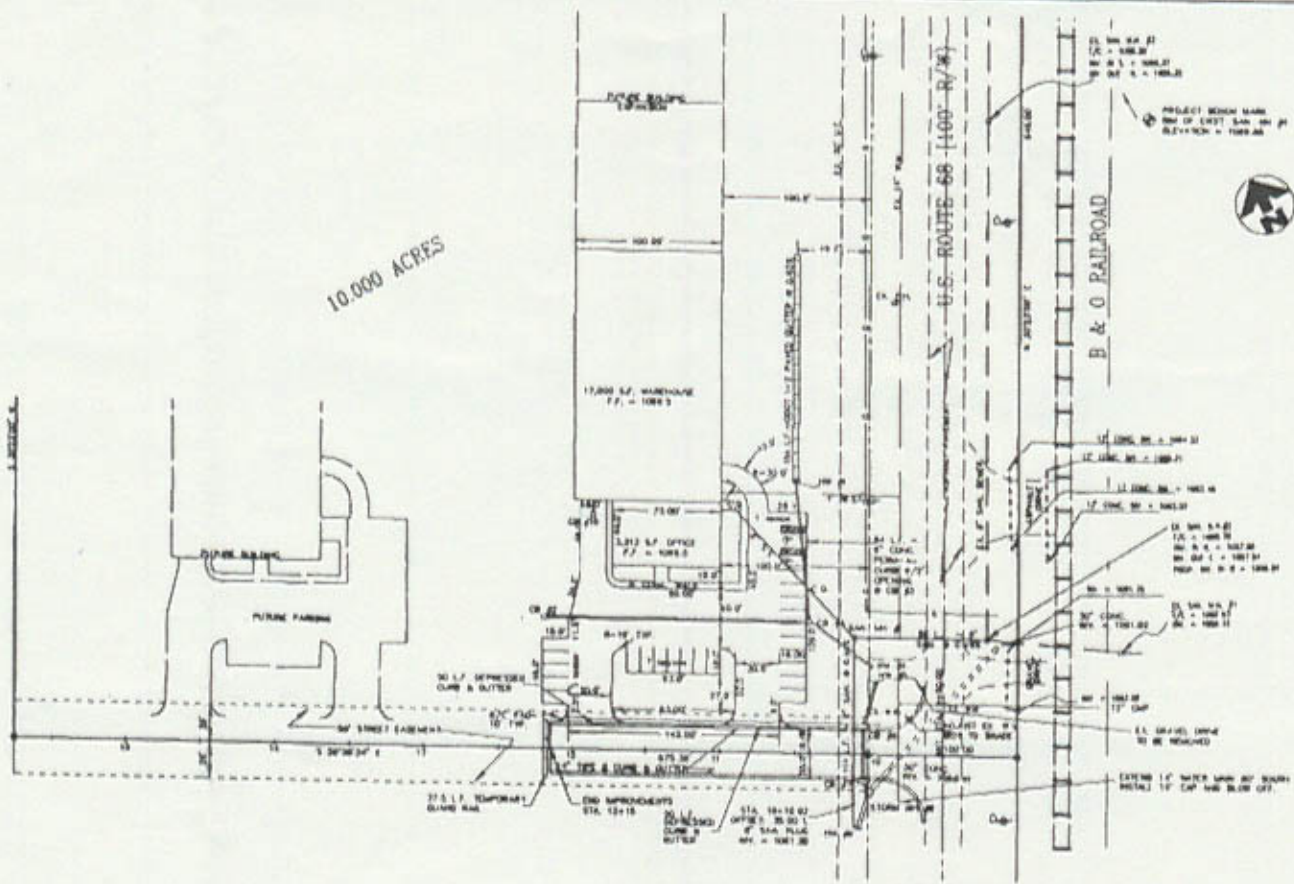


DRIFTE DETAIL
 CB #3

GRADING & DRAINAGE PLAN
 UNITED AMERICAN SALES
 10,000 ACRES
 PART OF S.S. 1098
 CITY OF WASHINGTON, CLYTON COUNTY, MISS.

RW Consultants
 Engineers & Surveyors - Planners
 Building & Landscape Designers
 CHECKED
 PULLING BLANKS
 DATE: JULY 25, 1964
 SCALE: 1" = 20'
 SCALE: 1" = 20'

10,000 ACRES



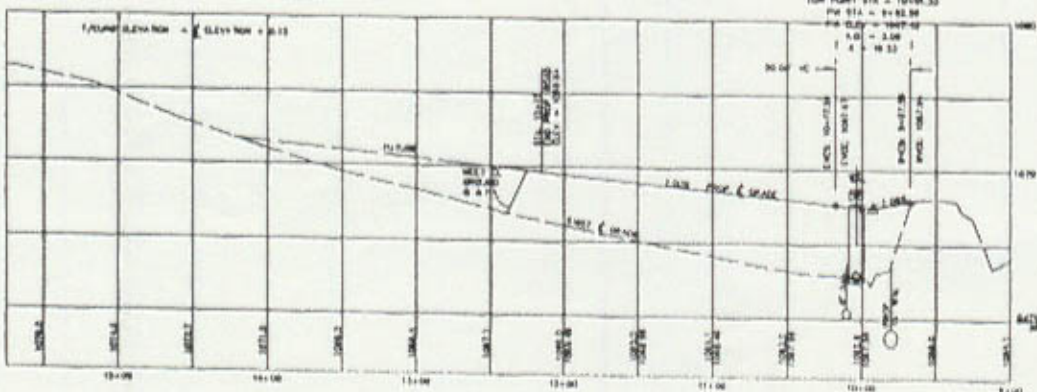
LEGEND

• 1/2" FROM PH FOUND

PARKING SPACES
 TYPICAL - 8' X 16'
 HANDICAPPED - 8' X 15'

SANITARY NECESSARY

SEE W.S. #1
 STA. 10643
 T/COVER = 10653
 DRY S = 10653
 DRY E = 10653



REV 7-25-64 ADDITIONAL PARKING
 REV 1-18-66 EAST SIDE WALK
 REV 1-18-67 CITY OF WASHINGTON COMMENTS

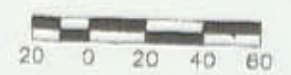
LOCATION PLAN
 UNITED AMERICAN SALES
 10,000 ACRES
 PART OF U.S. # 1064
 CITY OF WASHINGTON, CLINTON COUNTY, OHIO

SCALE: 1"=40' (1"=80')

DATE: JULY 23, 1964
 DRAWN BY: MORGAN DEY
 CHECKED BY: CHESTER
 PROJECT NO. 11274

RWC Consultants
 Engineers & Surveyors - Planners
 Building & Landscape Designers
 1007 Central Avenue
 Martinsburg, West Virginia 26001

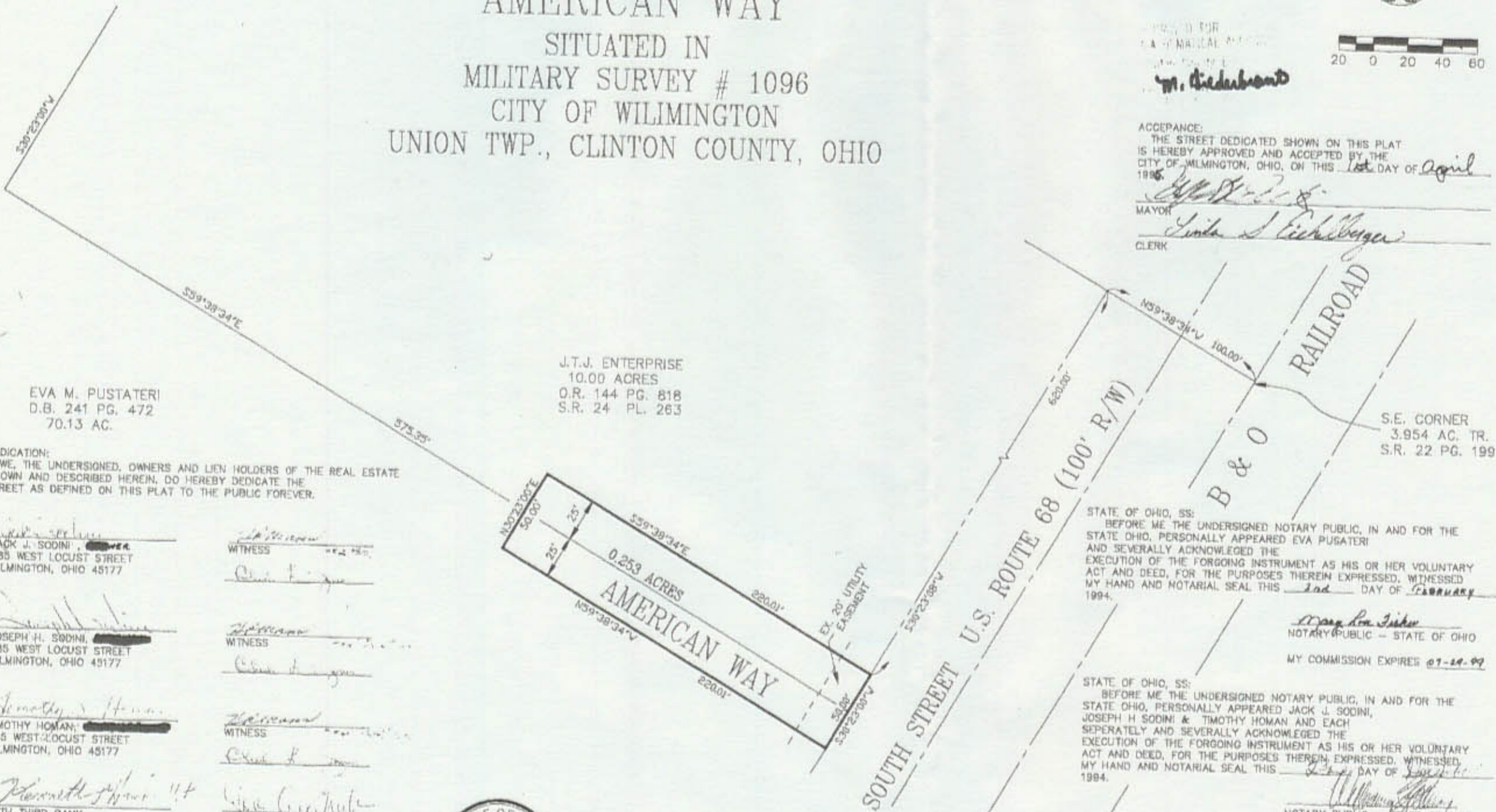
Volume: 26 Part: 38
 Clinton County Engineer's
 Record of Land Surveys
 File Date: 5-26-1995
 Scale: 1"=80'
 Deed Reference: Vol: 144 Pg: 818



DEDICATION PLAT OF
 AMERICAN WAY
 SITUATED IN
 MILITARY SURVEY # 1096
 CITY OF WILMINGTON
 UNION TWP., CLINTON COUNTY, OHIO

W. Dedubond

ACCEPTANCE:
 THE STREET DEDICATED SHOWN ON THIS PLAT
 IS HEREBY APPROVED AND ACCEPTED BY THE
 CITY OF WILMINGTON, OHIO, ON THIS 1st DAY OF April
 1995.
 Mayor: John J. ...
 Clerk: Janet ...



DEDICATION:
 WE, THE UNDERSIGNED, OWNERS AND LIEN HOLDERS OF THE REAL ESTATE
 SHOWN AND DESCRIBED HEREIN, DO HEREBY DEDICATE THE
 STREET AS DEFINED ON THIS PLAT TO THE PUBLIC FOREVER.

JACK J. SODINI
 985 WEST LOCUST STREET
 WILMINGTON, OHIO 45177

WITNESS

JOSEPH H. SODINI
 985 WEST LOCUST STREET
 WILMINGTON, OHIO 45177

WITNESS

TIMOTHY HOMAN
 985 WEST LOCUST STREET
 WILMINGTON, OHIO 45177

WITNESS

FIFTH THIRD BANK
 13 N. SOUTH STREET
 WILMINGTON, OHIO 45177

WITNESS

EVA M. PUSTATERI
 5 PETERSON PLACE
 WILMINGTON, OHIO 45177

WITNESS



I HEREBY CERTIFY THAT THIS PLAT IS BASED
 UPON A FIELD SURVEY MADE UNDER MY DIRECTION.
David L. Cox 10-13-94
 DAVID L. COX DATE
 OHIO PROFESSIONAL SURVEYOR NO. 7101

STATE OF OHIO, SS:
 BEFORE ME THE UNDERSIGNED NOTARY PUBLIC, IN AND FOR THE
 STATE OHIO, PERSONALLY APPEARED EVA PUSTATERI
 AND SEVERALLY ACKNOWLEDGED THE
 EXECUTION OF THE FORGOING INSTRUMENT AS HIS OR HER VOLUNTARY
 ACT AND DEED, FOR THE PURPOSES THEREIN EXPRESSED, WITNESSED
 MY HAND AND NOTARIAL SEAL THIS 1st DAY OF February
 1994.
Mary Ann Fisher
 NOTARY PUBLIC - STATE OF OHIO
 MY COMMISSION EXPIRES 07-24-99

STATE OF OHIO, SS:
 BEFORE ME THE UNDERSIGNED NOTARY PUBLIC, IN AND FOR THE
 STATE OHIO, PERSONALLY APPEARED JACK J. SODINI,
 JOSEPH H. SODINI & TIMOTHY HOMAN AND EACH
 SEPARATELY AND SEVERALLY ACKNOWLEDGED THE
 EXECUTION OF THE FORGOING INSTRUMENT AS HIS OR HER VOLUNTARY
 ACT AND DEED, FOR THE PURPOSES THEREIN EXPRESSED, WITNESSED
 MY HAND AND NOTARIAL SEAL THIS 1st DAY OF February
 1994.
William ...
 NOTARY PUBLIC - STATE OF OHIO
 MY COMMISSION EXPIRES ...

SCALE: 1"=40'
 DATE: 09-20-94
 DRAWN: KC
 DESIGNED: DLC
 CHECKED: DLG
 PROJ. NO: 931079
 DWG. NO: 931079SB

RWConsultants
 Engineers & Surveyors - Planners
 Building & Landscape Designers
 1227 Central Avenue
 Middletown, Ohio 45044
 513-425-8866 800-866-8866

DRAP IN ANOCE

3556