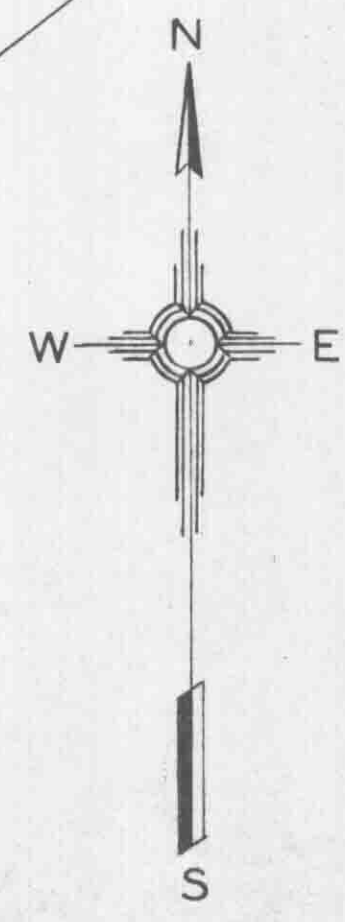
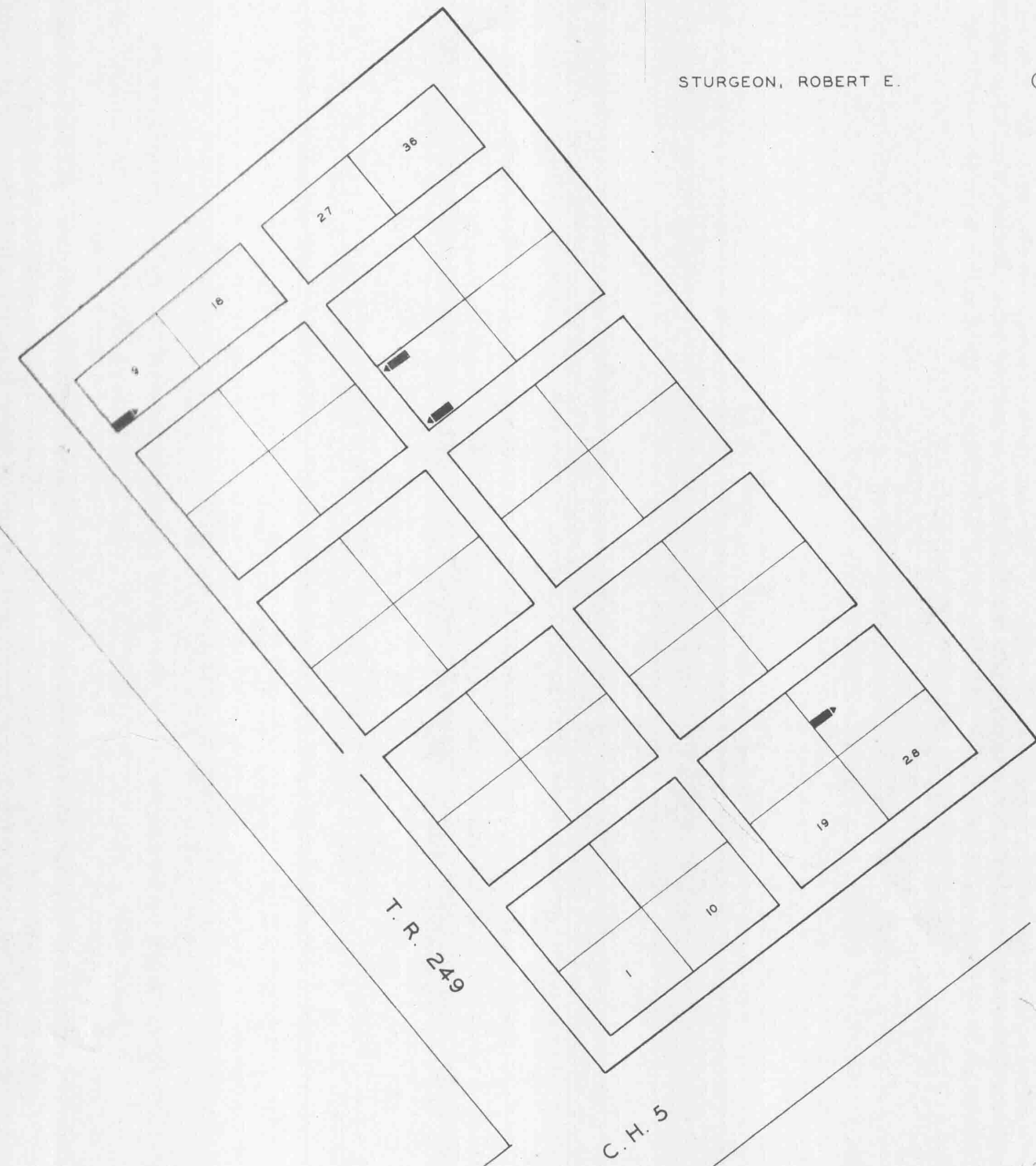


	WAR	LOT	GRAVE
ALDRIDGE, ABRAHAM	(19)	25	12
HOLSON, WILLIAM	(10)	9	10
RAILEY, HENRY	(19)	25	13
STURGEON, ROBERT E.	(31)	29	9

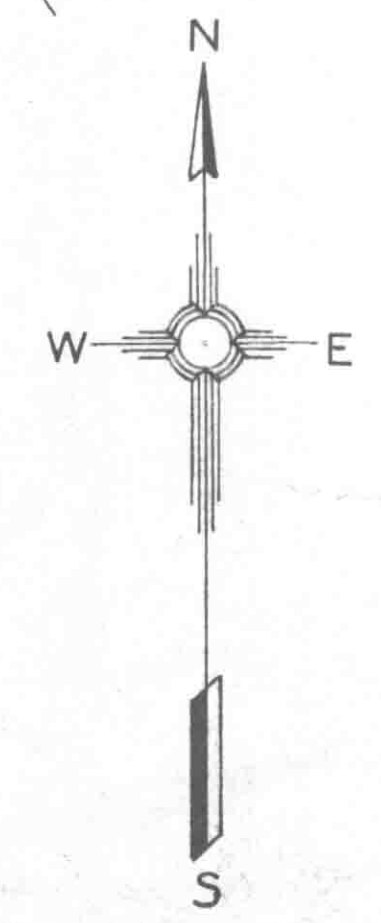
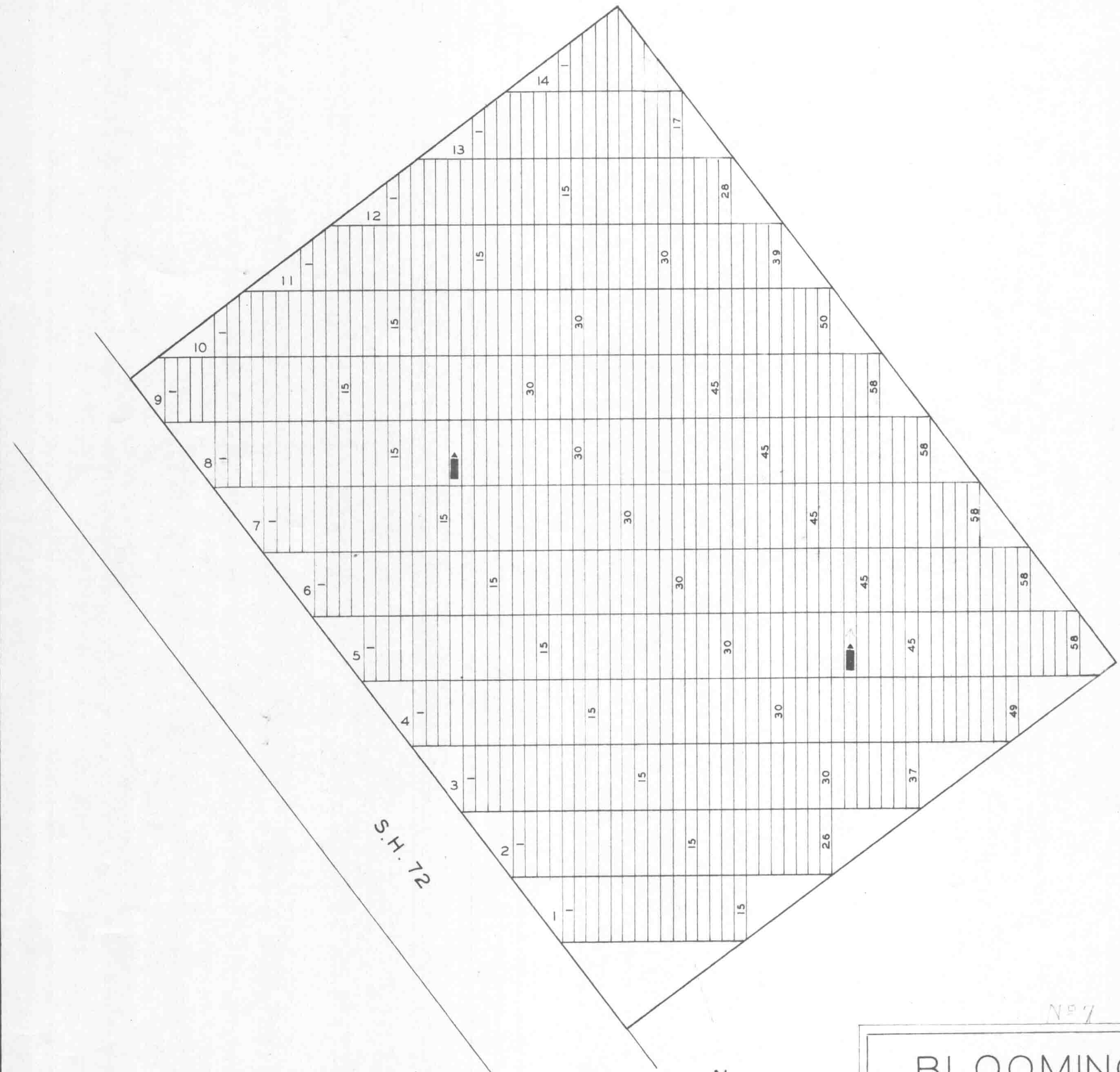


GRASSY RUN CEMETERY
CLINTON CO. WILSON TWP.

OFFICIAL PROJECT NO. 465 42 3 467 & 665 42 3 232

LEGEND	HISTORY
(10) WAR OF 1812	EST. DATE 1873
(16) MEXICAN WAR	SURVEY 830 P. DRAFFEN
(19) CIVIL WAR	DONOR JOHN B. PEELE
(25) WAR WITH SPAIN	
(31) WORLD WAR	

SCALE 20' = 1" .75 ACRE



	WAR	LOT	GRAVE
DOUGLAS, DAVID	(10)	5	40
TURNER, JAMES	(10)	8	20

BLOOMINGTON CEMETERY
CLINTON CO. WILSON TWP.

OFFICIAL PROJECT NO. 465-42-3-467 & 665-42-3-232

LEGEND	HISTORY
(10) WAR OF 1812	EST. PRIOR TO 1859
	DONOR E. GALLIMORE
	SURVEY 830 P. DRAFFEN
	OLD GRASSY RUN CEM.

SCALE 20' = 1" .85 ACRE