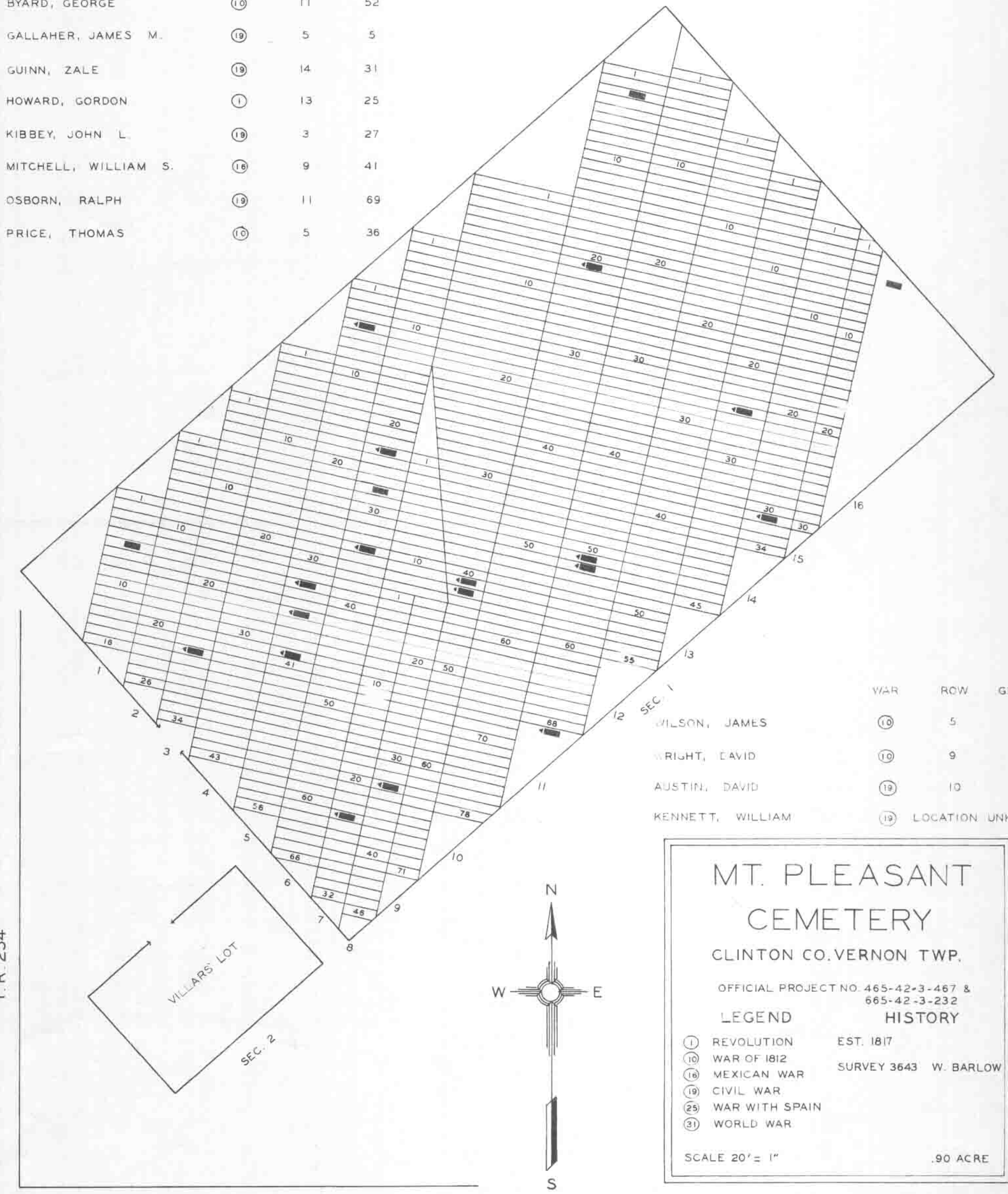


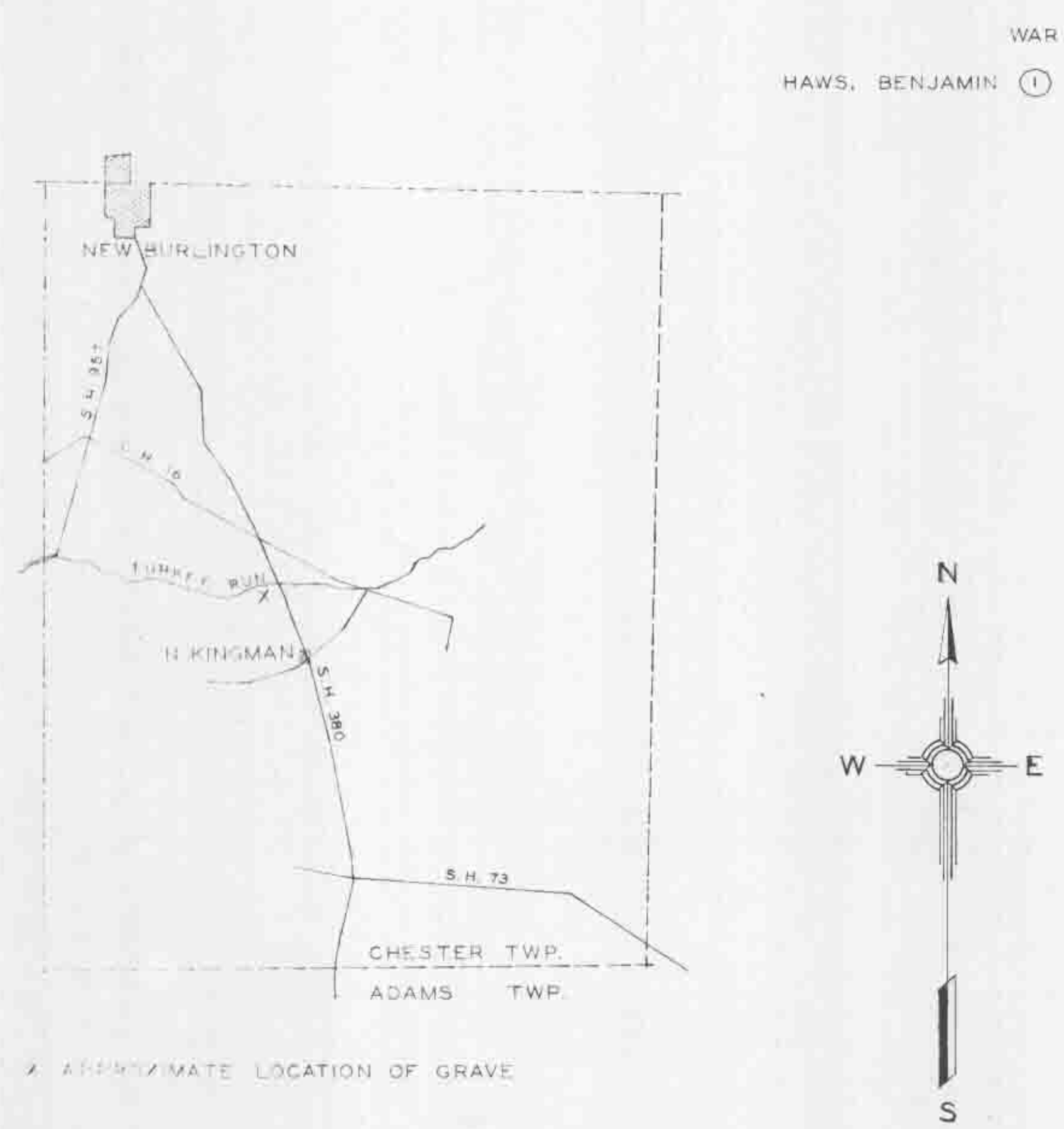
HOWLAND CEMETERY.
 CLINTON CO. CHESTER TWP.
 OFFICIAL PROJECT NO. 465-42-3-467 & 665-42-3-232
LEGEND HISTORY
 NO RECORD OF ESTABLISHMENT
 SURVEY 1556 H. BATES
 SCALE 20' = 1" .15 ACRE

	WAR	ROW	GRAVE		WAR	ROW	GRAVE
AUSTIN, SAMUEL HITT	18	6	34	SEGER, JOHN	19	16	2
AUSTIN, WILLIAM Q.	19	10	21	SUTTLES, BENJAMIN	19	6	28
BIGGS, GEORGE	19	7	24	THRESHER, GILBERT	19	1	6
BIGGS, WILLIAM	18	6	23	TRIBBEY, GEORGE	10	8	33
BRANDENBURG, WM.	10	5	40	WALLER, WILLIAM	1	11	51
BYARD, GEORGE	10	11	52				
GALLAHER, JAMES M.	19	5	5				
GUINN, ZALE	19	14	31				
HOWARD, GORDON	1	13	25				
KIBBEY, JOHN L.	19	3	27				
MITCHELL, WILLIAM S.	19	9	41				
OSBORN, RALPH	19	11	69				
PRICE, THOMAS	10	5	36				



	WAR	ROW	GRAVE
WILSON, JAMES	10	5	33
WRIGHT, DAVID	10	9	41
AUSTIN, DAVID	19	10	3
KENNETT, WILLIAM	19		LOCATION UNKNOWN

MT. PLEASANT CEMETERY
 CLINTON CO. VERNON TWP.
 OFFICIAL PROJECT NO. 465-42-3-467 & 665-42-3-232
LEGEND HISTORY
 1 REVOLUTION EST. 1817
 10 WAR OF 1812 SURVEY 3643 W. BARLOW
 18 MEXICAN WAR
 19 CIVIL WAR
 25 WAR WITH SPAIN
 31 WORLD WAR
 SCALE 20' = 1" .90 ACRE



BENJ. HAWS CEMETERY
 CLINTON CO. CHESTER TWP.
 OFFICIAL PROJECT NO. 465-42-3-467 & 665-42-3-232
LEGEND HISTORY
 1 REVOLUTION NO ESTABLISHED CEMETERY

WAR
 HAWS, BENJAMIN 1 EXACT LOCATION OF GRAVE UNKNOWN

x APPROXIMATE LOCATION OF GRAVE