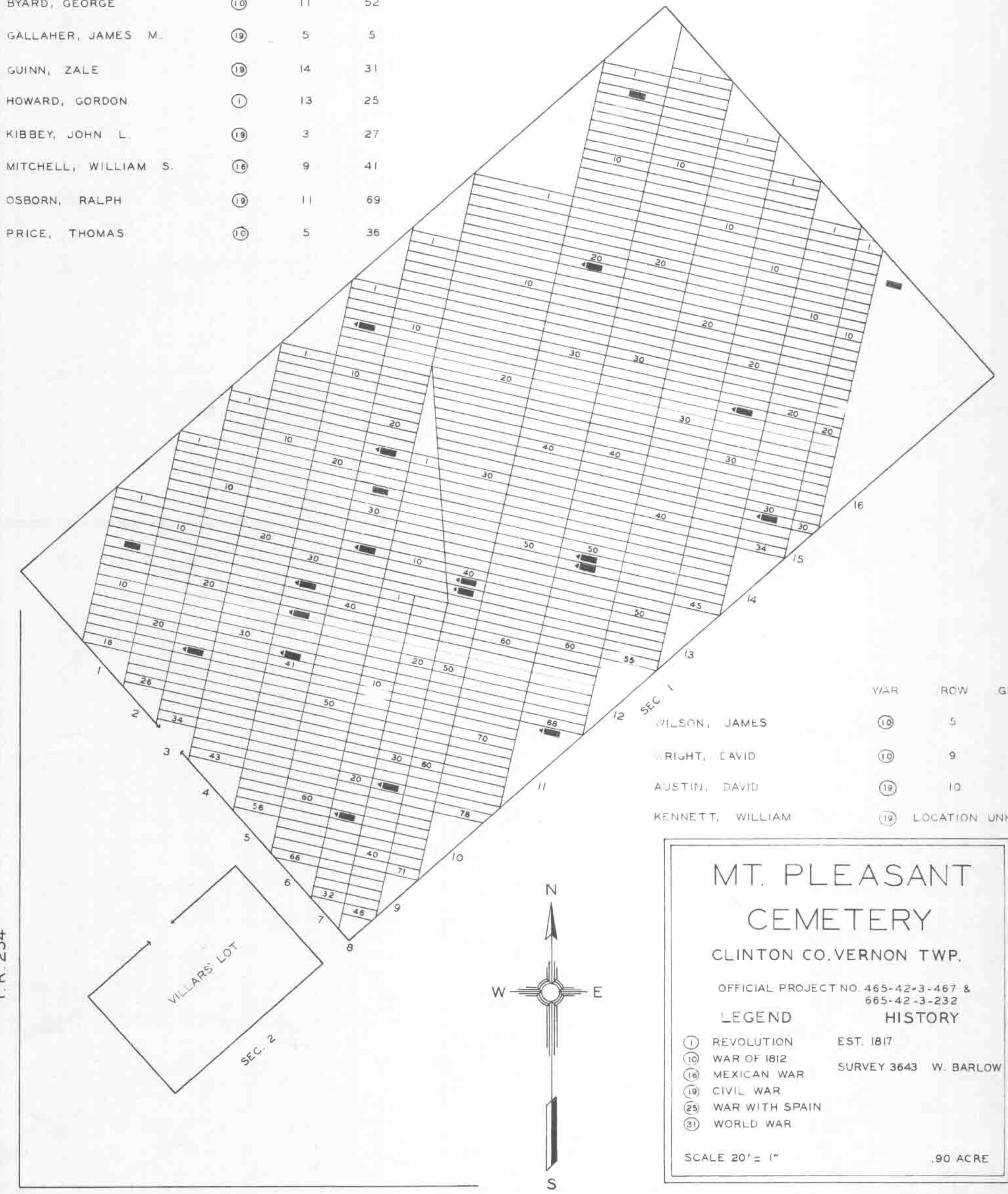
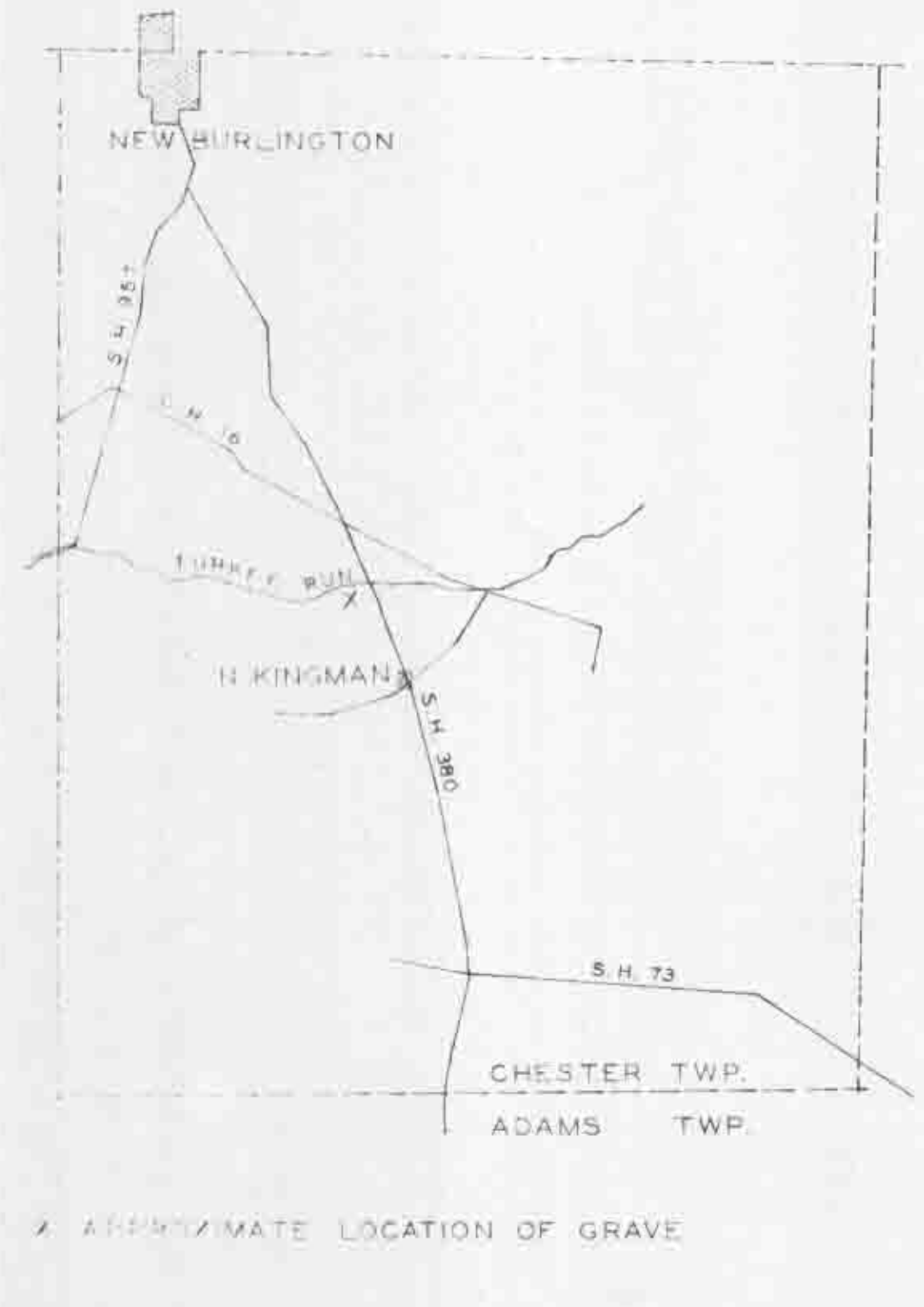


**HOWLAND CEMETERY.**  
 CLINTON CO. CHESTER TWP.  
 OFFICIAL PROJECT NO. 465-42-3-467 & 665-42-3-232  
**LEGEND HISTORY**  
 NO RECORD OF ESTABLISHMENT  
 SURVEY 1556 H. BATES  
 SCALE 20' = 1" .15 ACRE

	WAR	ROW	GRAVE		WAR	ROW	GRAVE
AUSTIN, SAMUEL HITT	18	6	34	SEGER, JOHN	19	16	2
AUSTIN, WILLIAM Q.	19	10	21	SUTTLES, BENJAMIN	19	6	28
BIGGS, GEORGE	19	7	24	THRESHER, GILBERT	19	1	6
BIGGS, WILLIAM	18	6	23	TRIBBEY, GEORGE	10	8	33
BRANDENBURG, WM.	10	5	40	WALLER, WILLIAM	1	11	51
BYARD, GEORGE	10	11	52				
GALLAHER, JAMES M.	19	5	5				
GUINN, ZALE	19	14	31				
HOWARD, GORDON	1	13	25				
KIBBEY, JOHN L.	19	3	27				
MITCHELL, WILLIAM S.	19	9	41				
OSBORN, RALPH	19	11	69				
PRICE, THOMAS	10	5	36				



WAR  
 HAWS, BENJAMIN ① EXACT LOCATION OF GRAVE UNKNOWN



**BENJ. HAWS CEMETERY**  
 CLINTON CO. CHESTER TWP.  
 OFFICIAL PROJECT NO. 465-42-3-467 & 665-42-3-232  
**LEGEND HISTORY**  
 ① REVOLUTION NO ESTABLISHED CEMETERY

	WAR	ROW	GRAVE		WAR	ROW	GRAVE
				WILSON, JAMES	10	5	33
				WRIGHT, DAVID	10	9	41
				AUSTIN, DAVID	19	10	3
				KENNETT, WILLIAM	19		LOCATION UNKNOWN

**MT. PLEASANT CEMETERY**  
 CLINTON CO. VERNON TWP.  
 OFFICIAL PROJECT NO. 465-42-3-467 & 665-42-3-232  
**LEGEND HISTORY**  
 ① REVOLUTION EST. 1817  
 10 WAR OF 1812 SURVEY 3643 W. BARLOW  
 18 MEXICAN WAR  
 19 CIVIL WAR  
 25 WAR WITH SPAIN  
 31 WORLD WAR  
 SCALE 20' = 1" .90 ACRE

T. R. 252