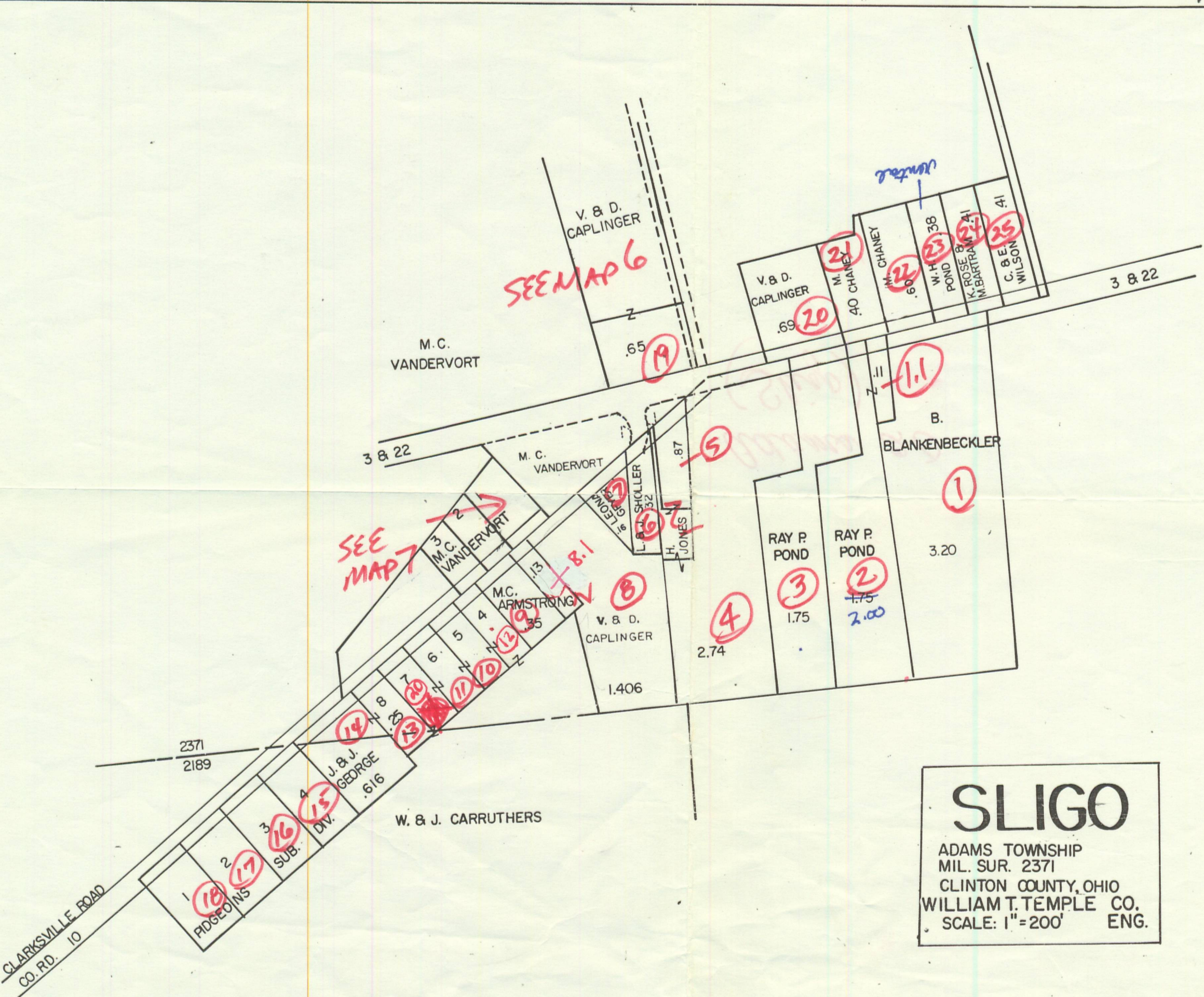


20-23
20-2
2.08



SLIGO
 ADAMS TOWNSHIP
 MIL. SUR. 2371
 CLINTON COUNTY, OHIO
 WILLIAM T. TEMPLE CO.
 SCALE: 1" = 200' ENG.

EXCLUSIVE RIGHTS RESERVED
 BY
 CLINTON COUNTY ENGINEER