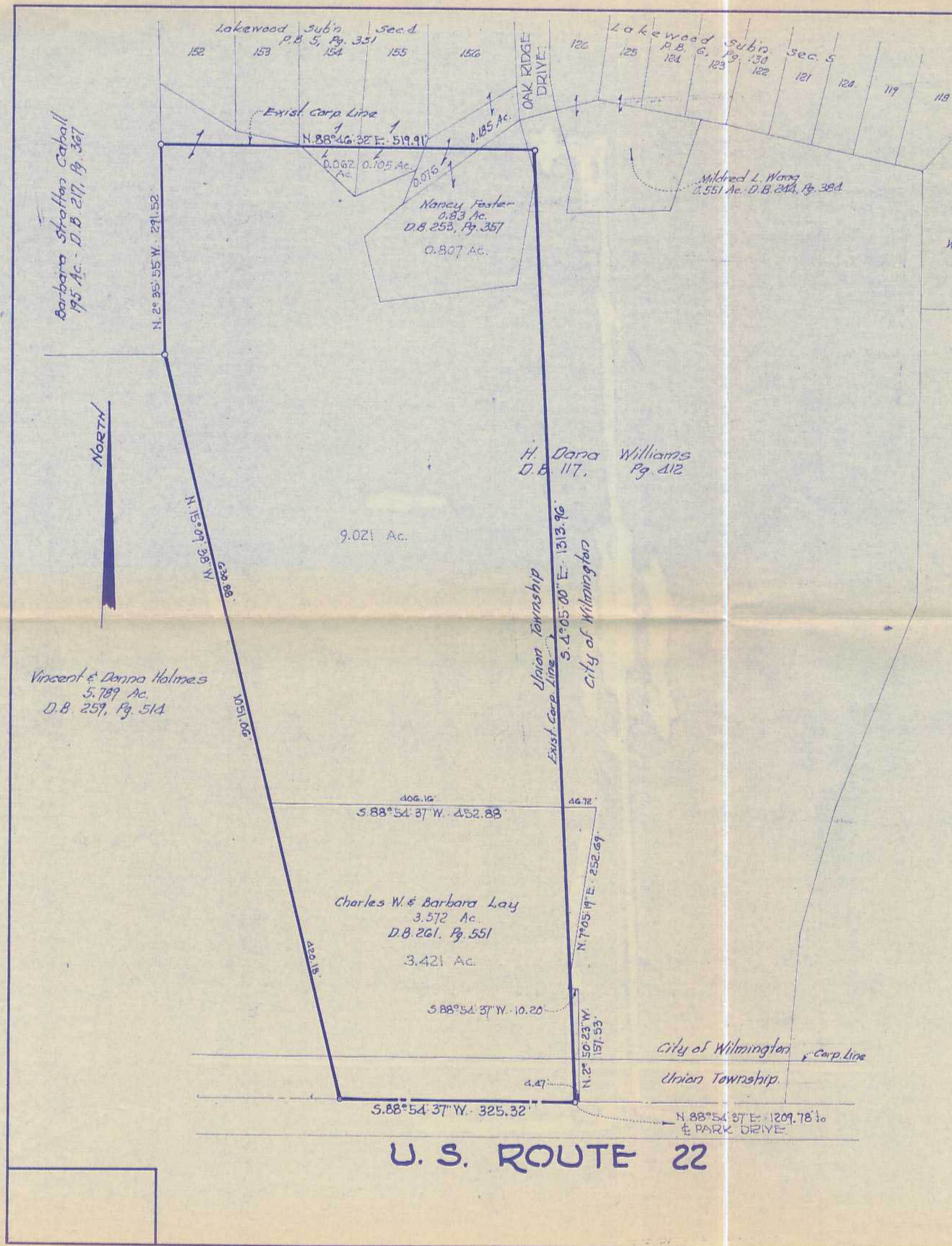




VOLUME \_\_\_\_\_ PLAT No. \_\_\_\_\_  
 CLINTON COUNTY ENGINEER'S  
 RECORD OF LAND SURVEYS  
 DATE: SEPT. 13, 1978  
 SCALE: 1" = 100'  
 DEED REFERENCE: SEE BELOW  
 TOWNSHIP: UNION  
 MILITARY SURVEY: 155G



AUDITOR'S TRANSFER DATA			
OWNER	DEED REFERENCE	TRACT	ACREAGE IN ANNEXATION
H. DANA WILLIAMS	D.B. 117, Pg. 412	0 Fig. 130 Ac. ±	9.021 Ac.
NANCY J. FOSTER	D.B. 253, Pg. 357	0.83 Ac.	0.807 Ac.
NANCY J. FOSTER	D.B. 253, Pg. 357	0.185 Ac.	0.076 Ac.
CHARLES W. & BARBARA LAY	D.B. 261, Pg. 551	3.572 Ac.	3.421 Ac.
VERNON G. MARCONETT et al.	D.B. 236, Pg. 46	Lot 154	0.062 Ac.
THOMAS G. & M.L. MORAND	D.B. 186, Pg. 441	Lot 155	0.105 Ac.
<b>TOTAL</b>			<b>13.492 Ac.</b>



**GALE L. HELMS & ASSOC., INC.**  
 Consulting Engineers & Surveyors  
 222 N. OAKLAND AVE.  
 WASHINGTON C.H., OHIO

**PLAT OF ANNEXATION**  
**13.492 ACRES**

V.M.S. 155G  
 UNION TOWNSHIP  
 CLINTON COUNTY, OHIO

Sept. 13, 1978 Rev. 7/20/79 Scale: 1" = 100'

Wilmington Annex.

September 1978

13.492

!

12.634 acres